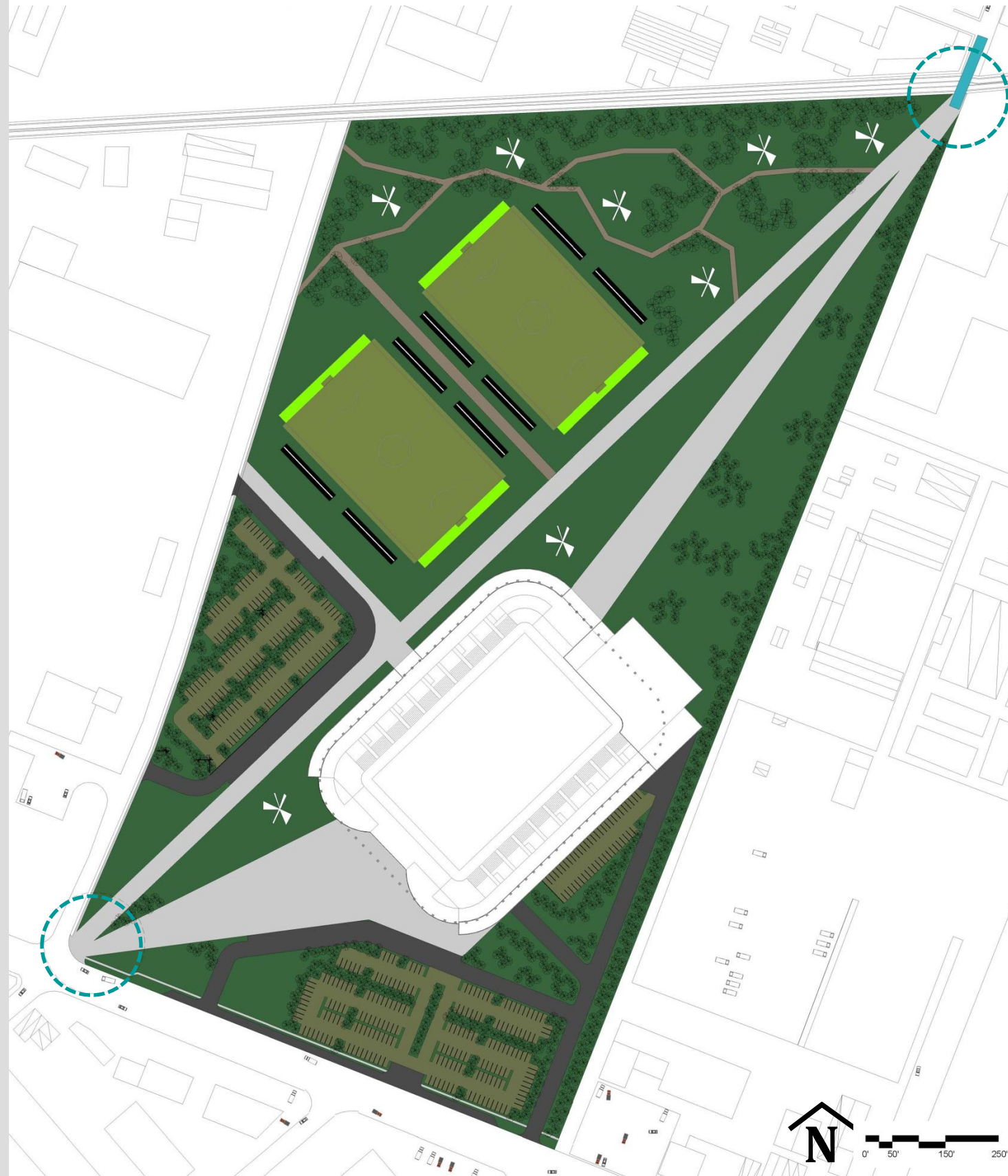
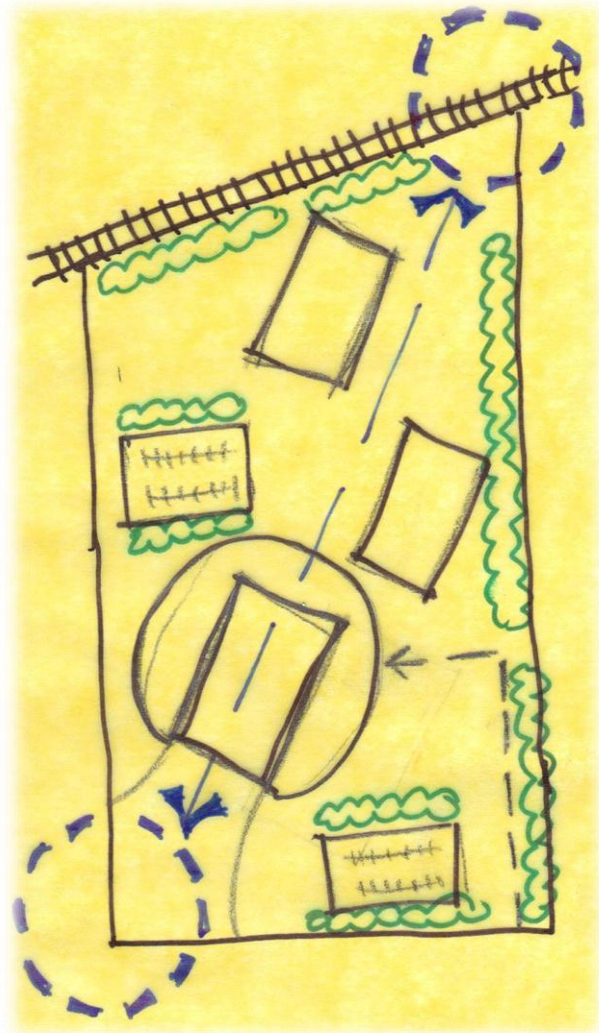


functional and spatial : ALTERNATE ONE



CONCEPT: Figural

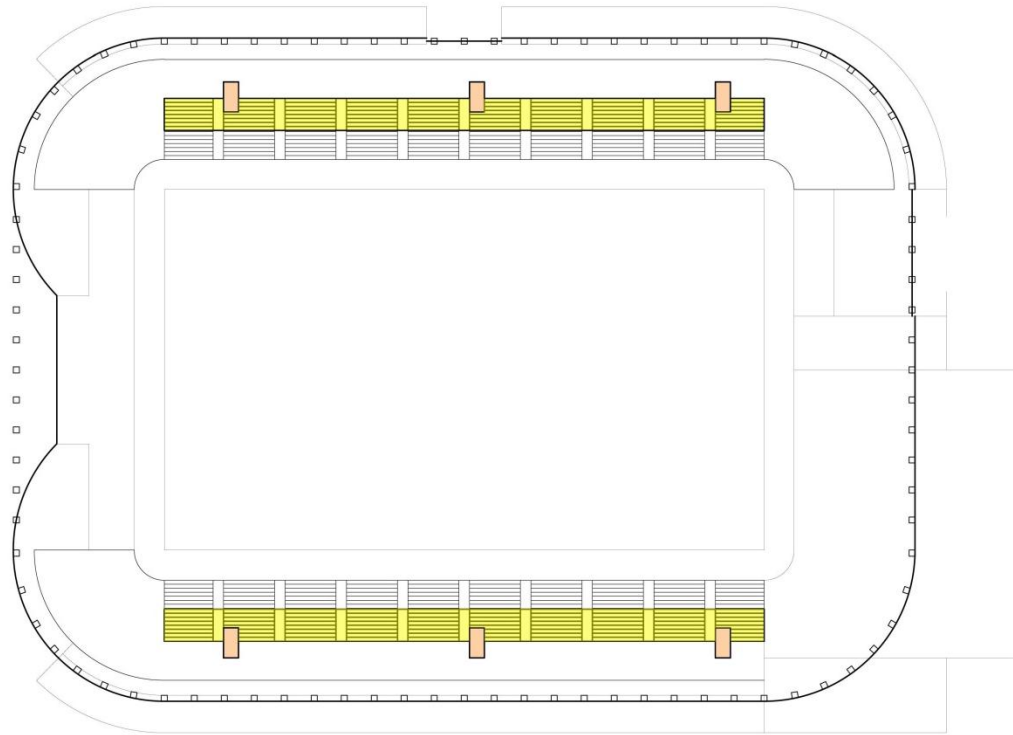
Varying shapes in the form help visually define the different uses of the space.

- Rectilinear shape defines support spaces
- Curvilinear shape defines the main use of the stadium, highlighting the pitch

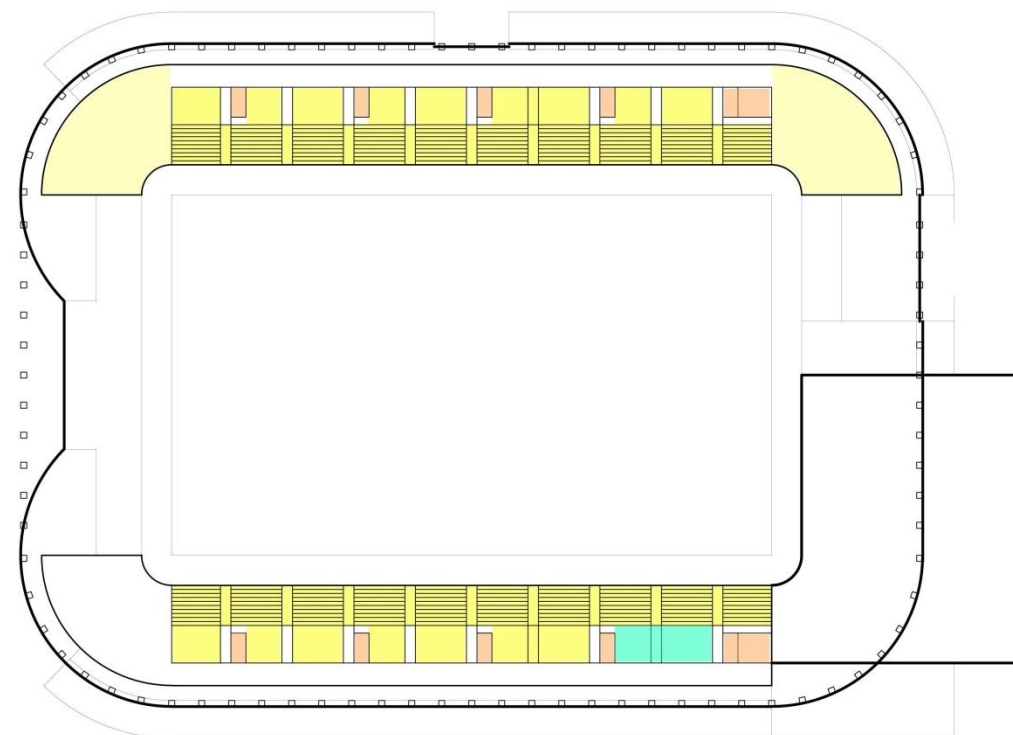
OBJECTIVES:

- Design for the visitors and pedestrians approach.
- Develop a defined circulation on site and through stadium
- Create connections to the surrounding areas (Main Street and artist community) with the development of a bridge
- Allow the plan to be divided to the flexibility for uses and operation
- Establish a connection between stadium and practice fields. Bringing concessions to the exterior of the stadium
- Respond to and incorporate existing and planned pedestrian infrastructure

SKETCHES/SITE PLAN



THIRD FLOOR PLAN



SECOND FLOOR PLAN

CONCEPT: Figural

Varying shapes in the form help visually define the different uses of the space.

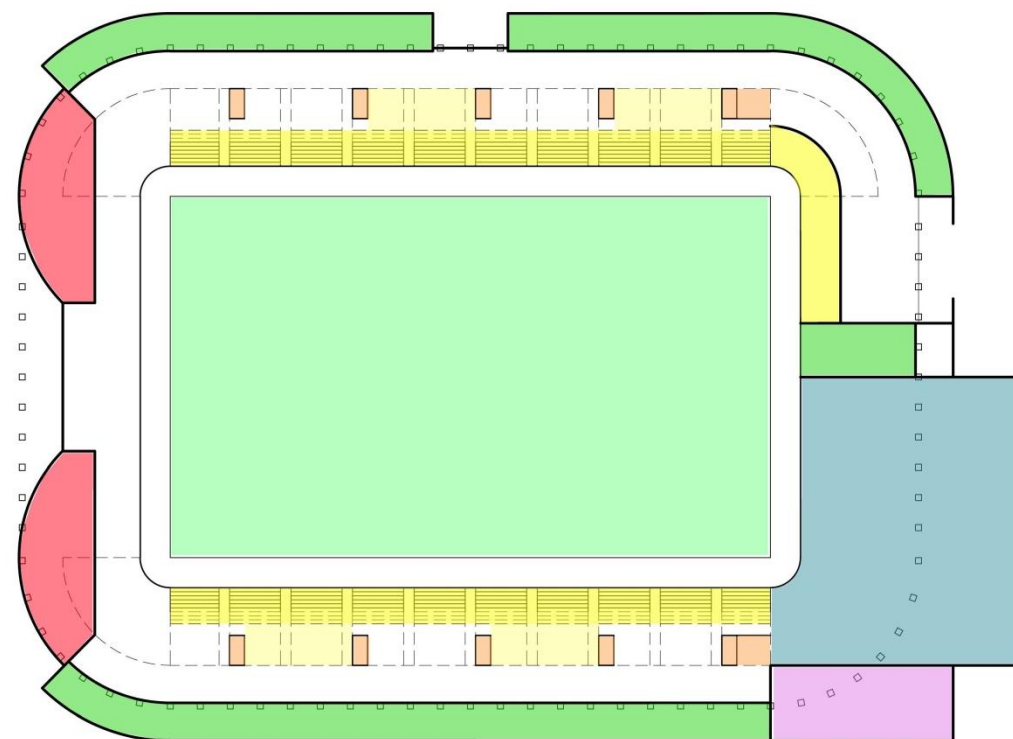
- Rectilinear shape defines support spaces
- Curvilinear shape defines the main use of the stadium, highlighting the pitch

OBJECTIVES:

- Design for the visitors and pedestrians approach.
- Develop a defined circulation on site and through stadium
- Create connections to the surrounding areas (Main Street and artist community) with the development of a bridge
- Allow the plan to be divided to the flexibility for uses and operation
- Establish a connection between stadium and practice fields. Bringing concessions to the exterior of the stadium
- Respond to and incorporate existing and planned pedestrian infrastructure

LEGEND

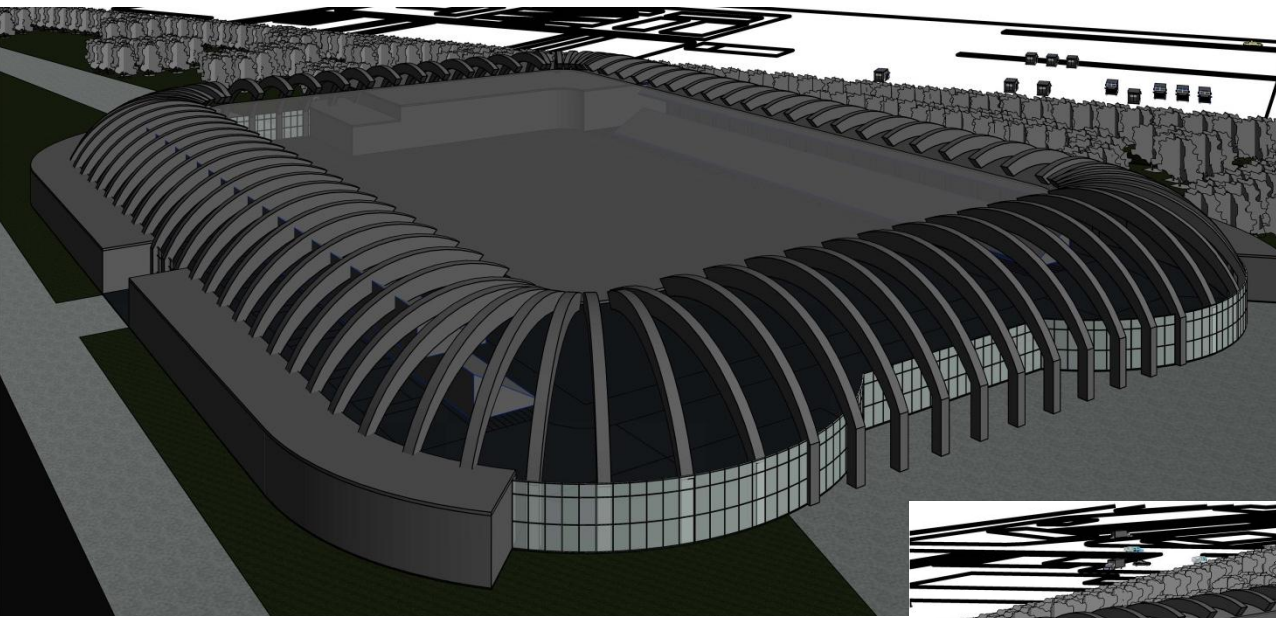
- SPECTATOR FACILITIES
- ADMINISTRATION/TICKET MANAGER
- TEAM FACILITIES
- CONCESSIONS
- VERTICAL CIRCULATION
- OPERATION SUPPORT
- MEDIA FACILITIES



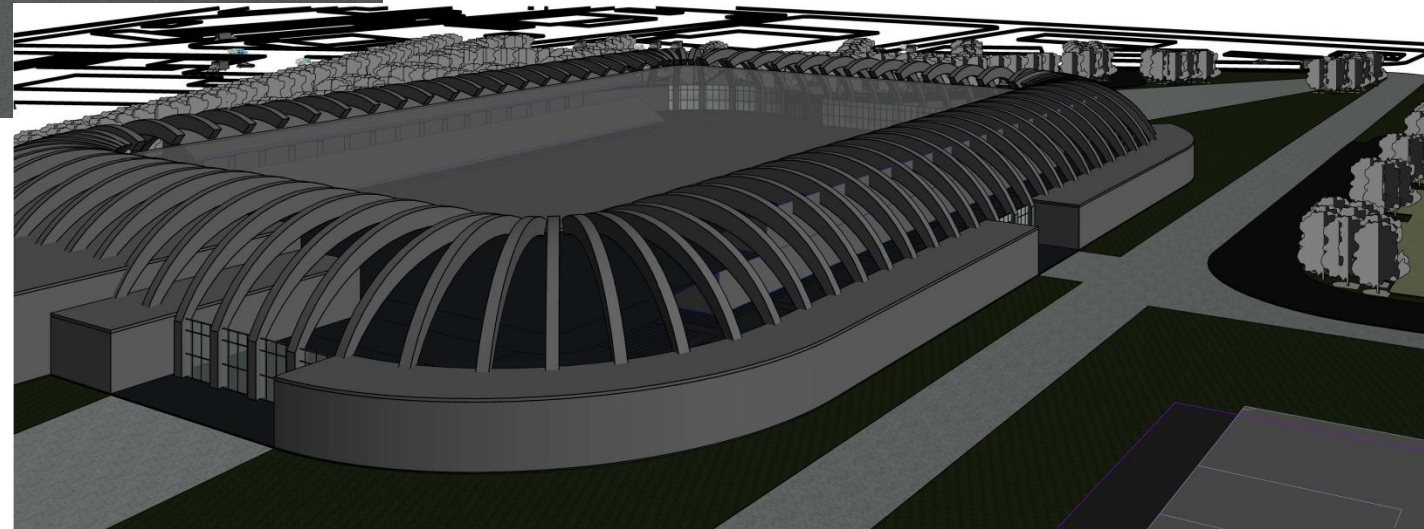
FIRST FLOOR PLAN

FLOOR PLANS

functional and spatial : ALTERNATE ONE



3D MODEL VIEWS



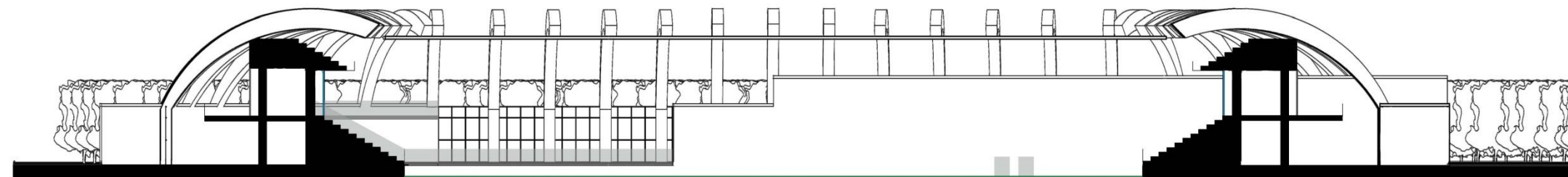
CONCEPT: Figural

Varying shapes in the form help visually define the different uses of the space.

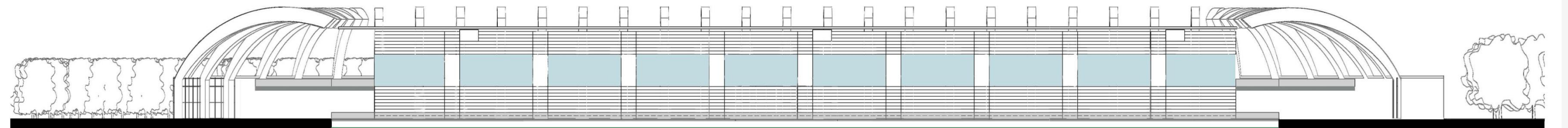
- Rectilinear shape defines support spaces
- Curvilinear shape defines the main use of the stadium, highlighting the pitch

OBJECTIVES:

- Design for the visitors and pedestrians approach.
- Develop a defined circulation on site and through stadium
- Create connections to the surrounding areas (Main Street and artist community) with the development of a bridge
- Allow the plan to be divided to the flexibility for uses and operation
- Establish a connection between stadium and practice fields. Bringing concessions to the exterior of the stadium
- Respond to and incorporate existing and planned pedestrian infrastructure



SECTION – WEST/EAST



SECTION – SOUTH/NORTH

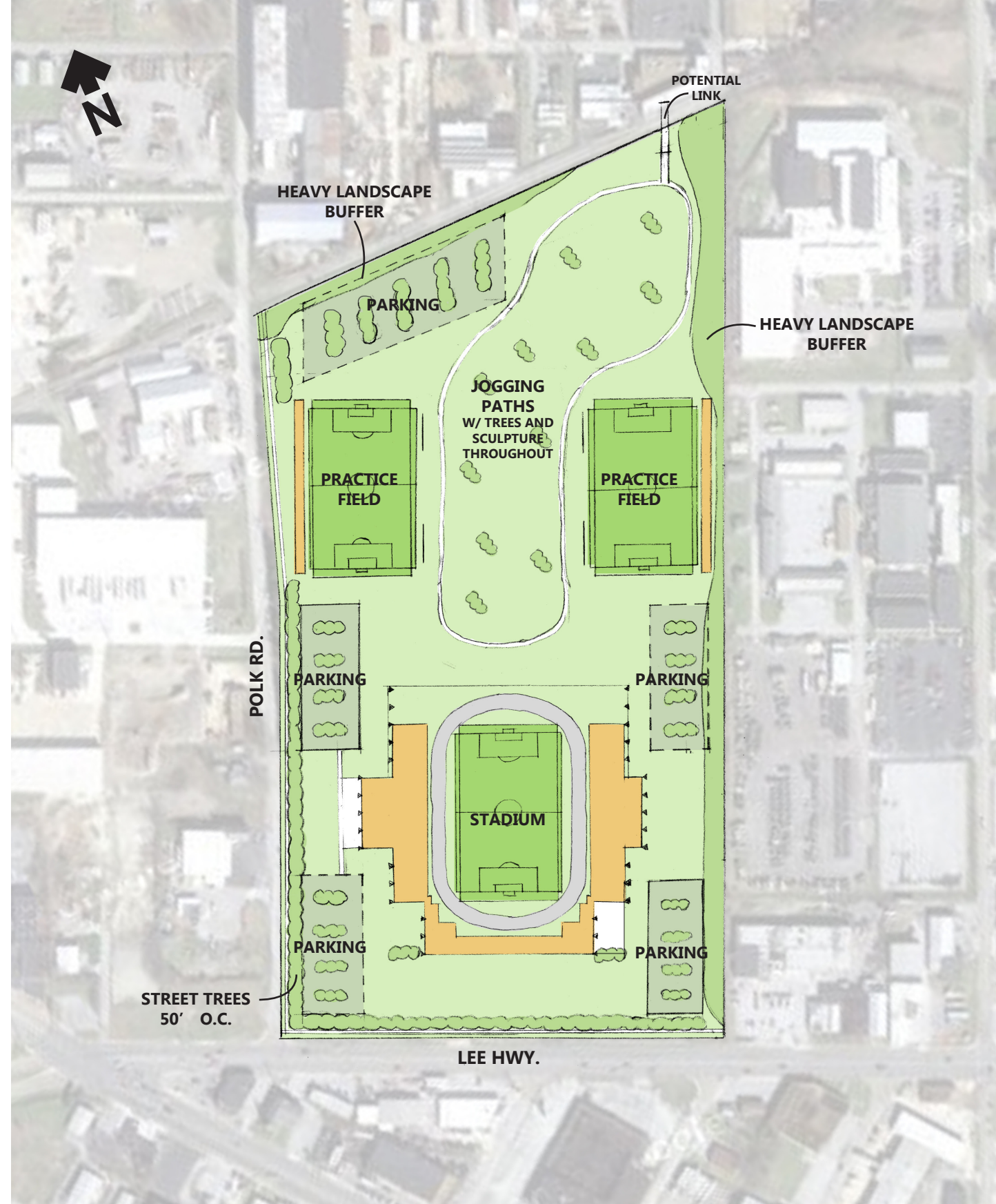
3D MODEL AND SECTIONS

MONTAGUE PARK STADIUM Chattanooga, TN

Amanda Kight

ARC 5824 Advanced Design Studio 2
Module 2 Preliminary Conceptual Design

alternate 1: Functional and Spacial Relationships



Objectives

Primary

- Allow for event flexibility, such as games, concerts, conventions, etc.
- Utilize a form/structure that allows for future expansion
- Design circulation and the layout for the convenience of the players

Secondary

- Provide space for mobile concessions for added flexibility
- Express the structure from the exterior, possibly looking like industrial sculpture
- Design for clear circulation for the spectators

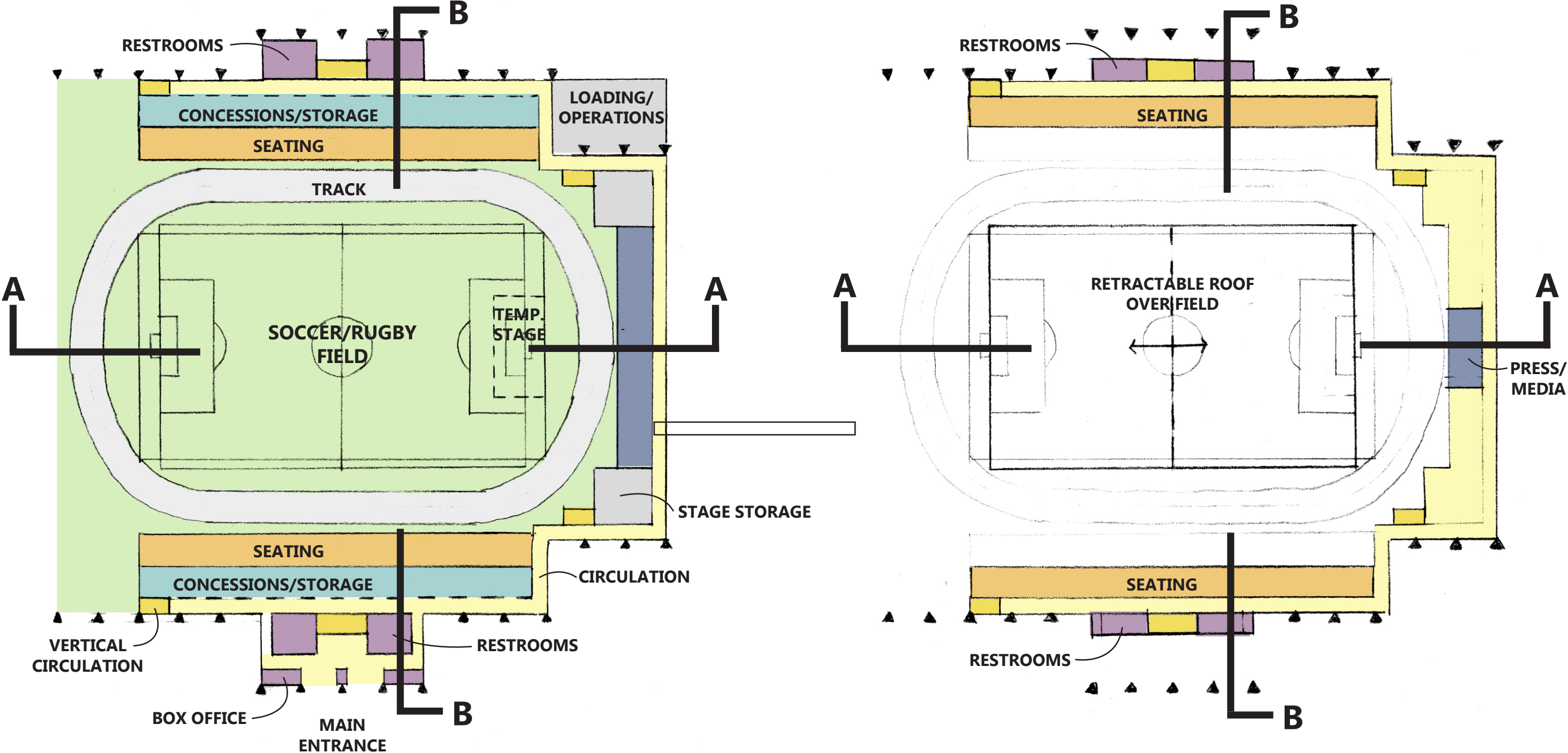
CONCEPTUAL SITE PLAN

1" = 300'

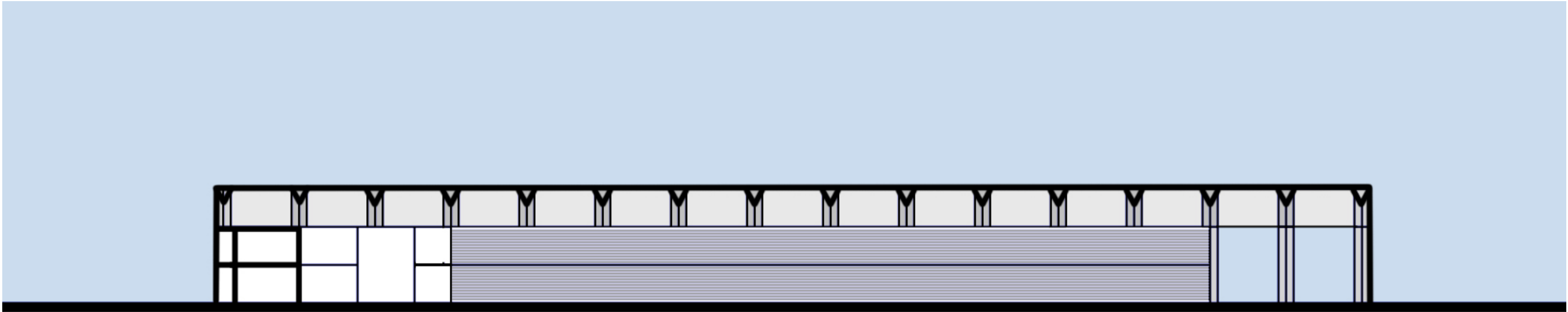
MONTAGUE PARK STADIUM Chattanooga, TN

alternate 1: Functional and Spatial Relationships

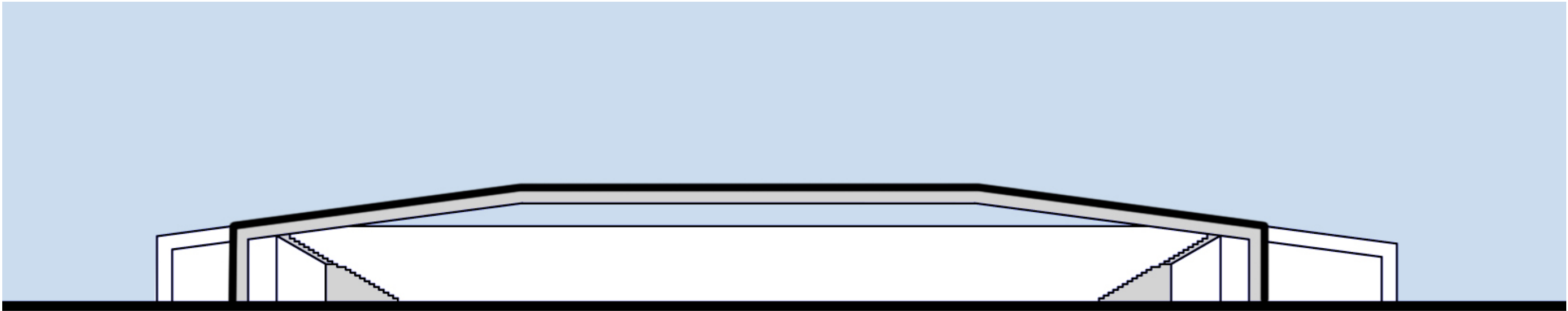
Amanda Kight
ARC 5824 Advanced Design Studio 2
Module 2 Preliminary Conceptual Design



← N **CONCEPTUAL PLANS**
1" = 100'



SECTION A



SECTION B

CONCEPTUAL SECTIONS

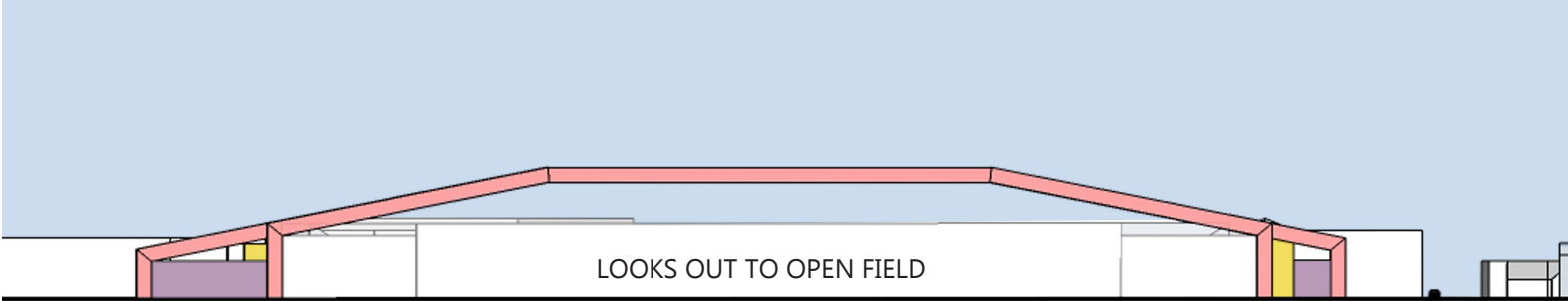
0

100'

MONTAGUE PARK STADIUM Chattanooga, TN

alternate 1: Functional and Spatial Relationships

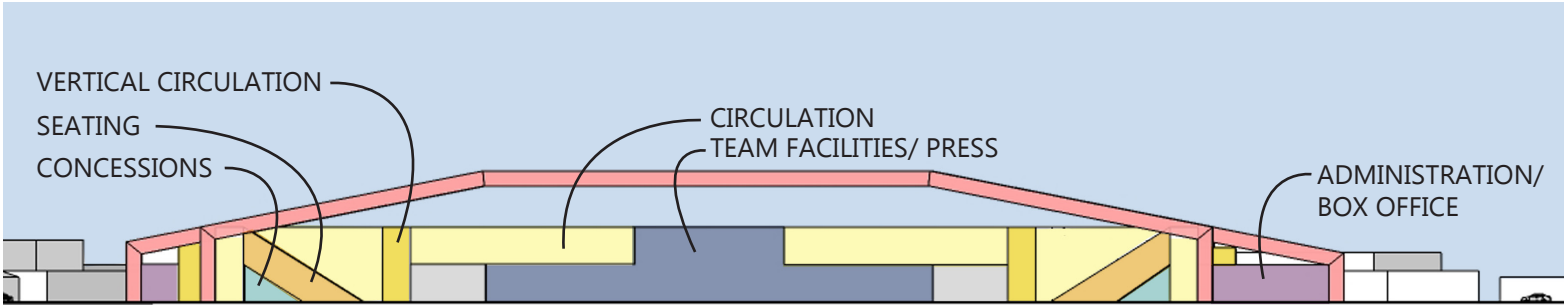
Amanda Kight
ARC 5824 Advanced Design Studio 2
Module 2 Preliminary Conceptual Design



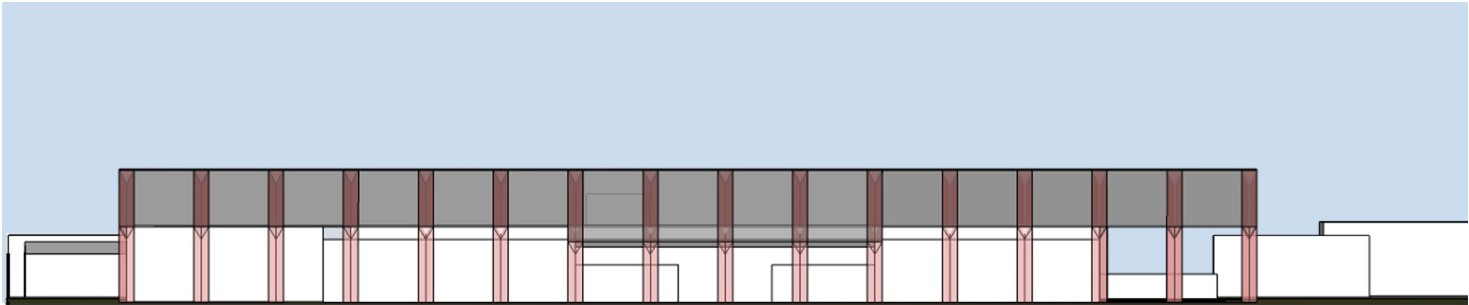
SOUTH-WEST



NORTH-WEST

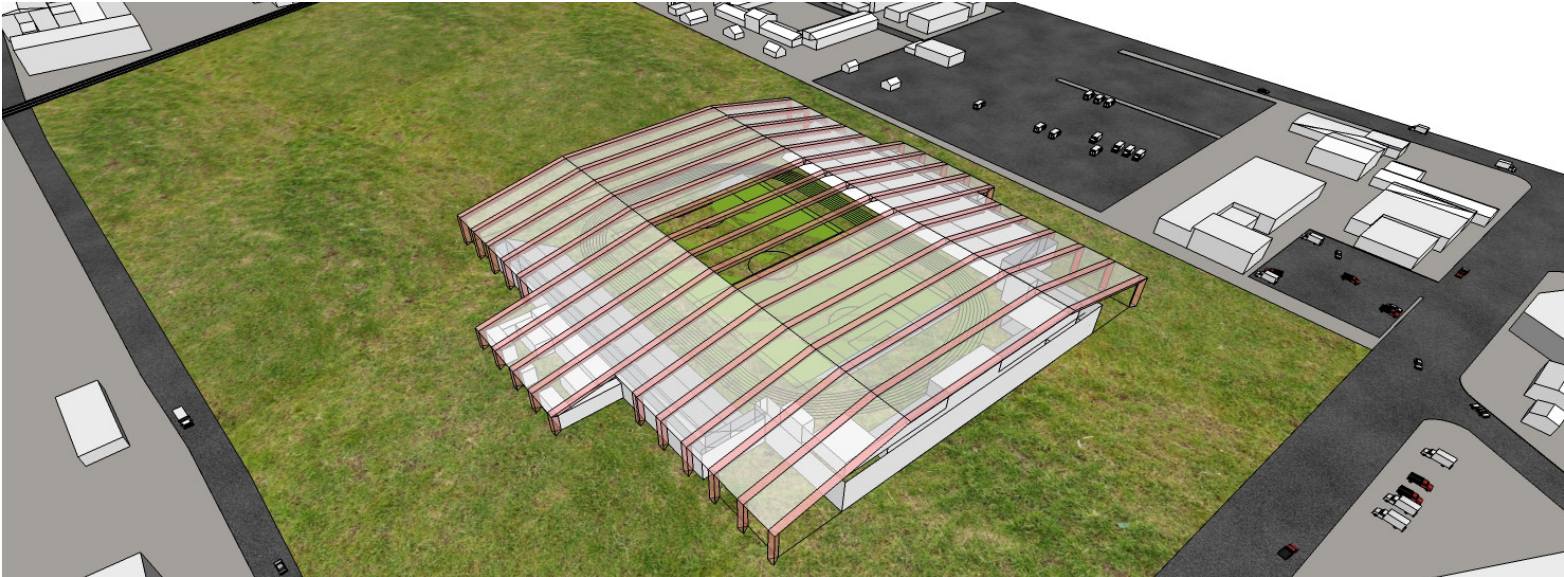


NORTH-EAST

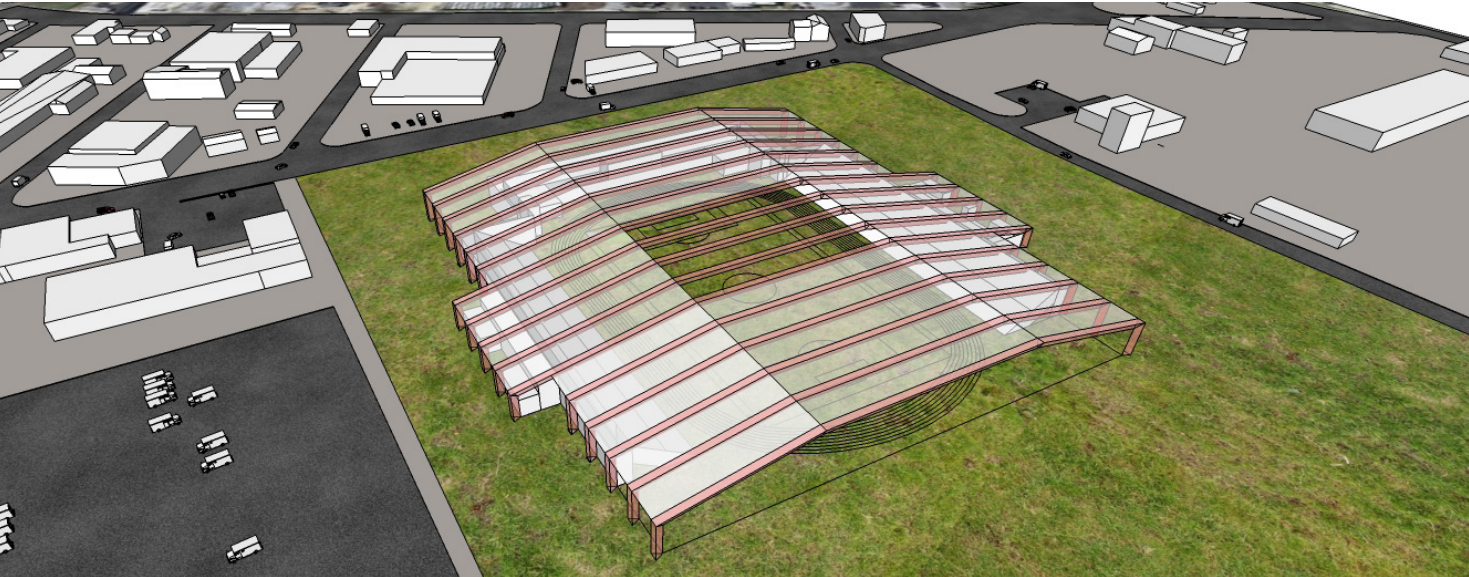


SOUTH-EAST

ELEVATIONS
0 100'

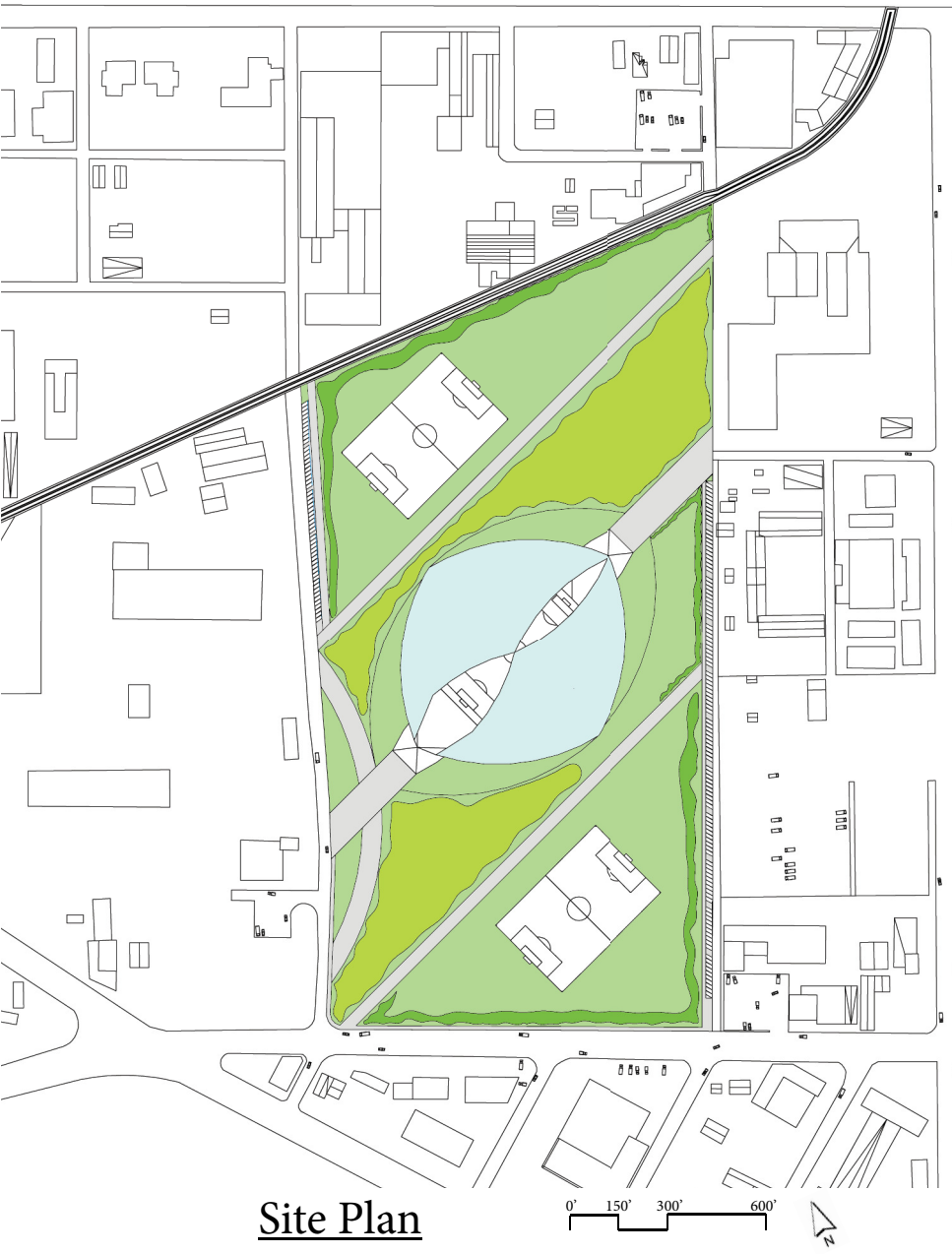


3D MASSING



Proposed Stadium Design

Alternative #2 - Sustainable Context



Site Plan

Program Key

- Seating Bowl
- Concessions
- Operations Support
- Team Facilities
- Medical Facilities
- Suites
- Restrooms
- Field Storage

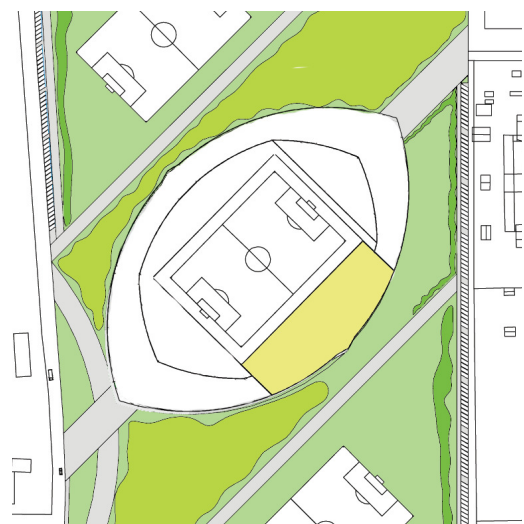
Site Plan Key

- Vegetation
- Sculptor Area
- Building footprint

Design Concept:

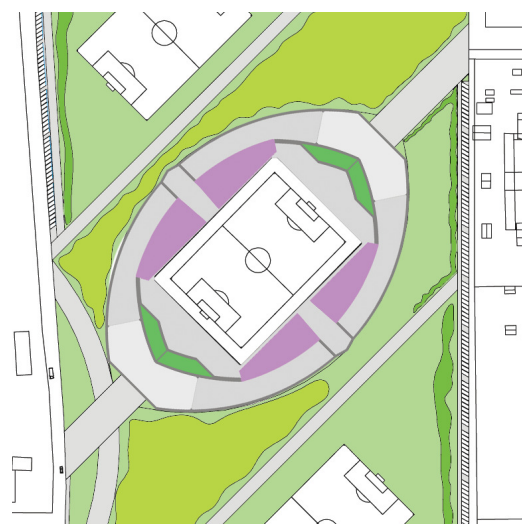
Main Objectives:

- Combine systems to maximize efficiency and lower the needed footprint and impact.
- Create interactions spots between the public and the sustainable systems or structure.
- Maximize natural light into stadium with opening in the roof and changes in floor elevations.
- Replace typical materials with energy producing or materials that increase building efficiency.

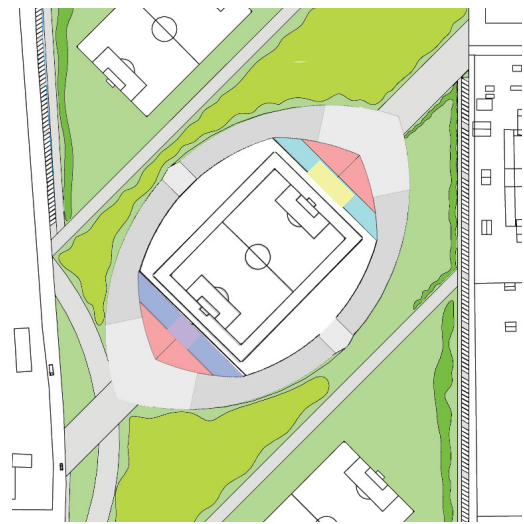


Upper Bowl

Based on Figural Space Typology



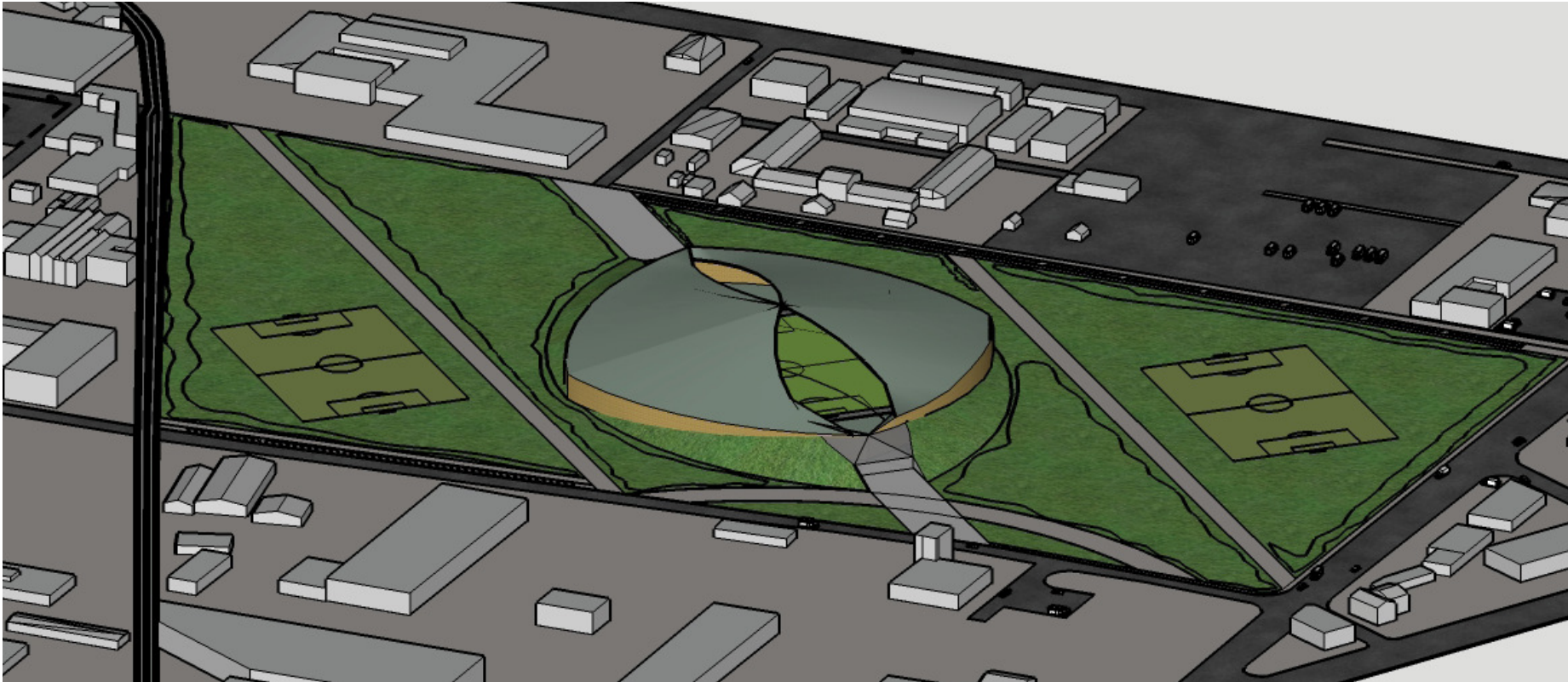
Seating Bowl



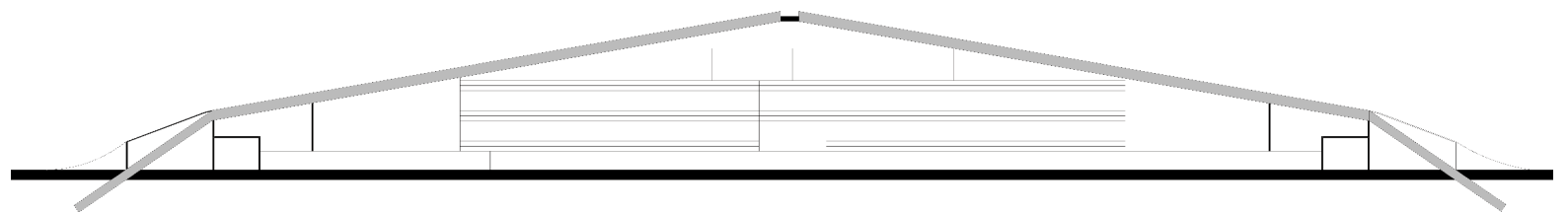
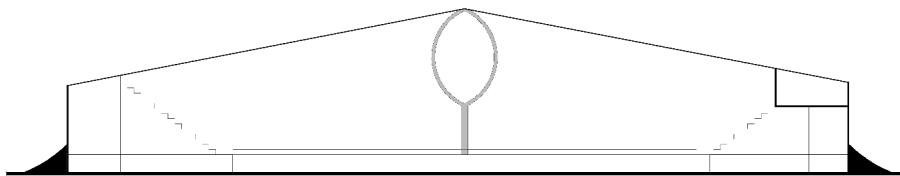
Ground Floor

Proposed Stadium Design

Alternative #2 - Sustainable Context



3D View



Sections

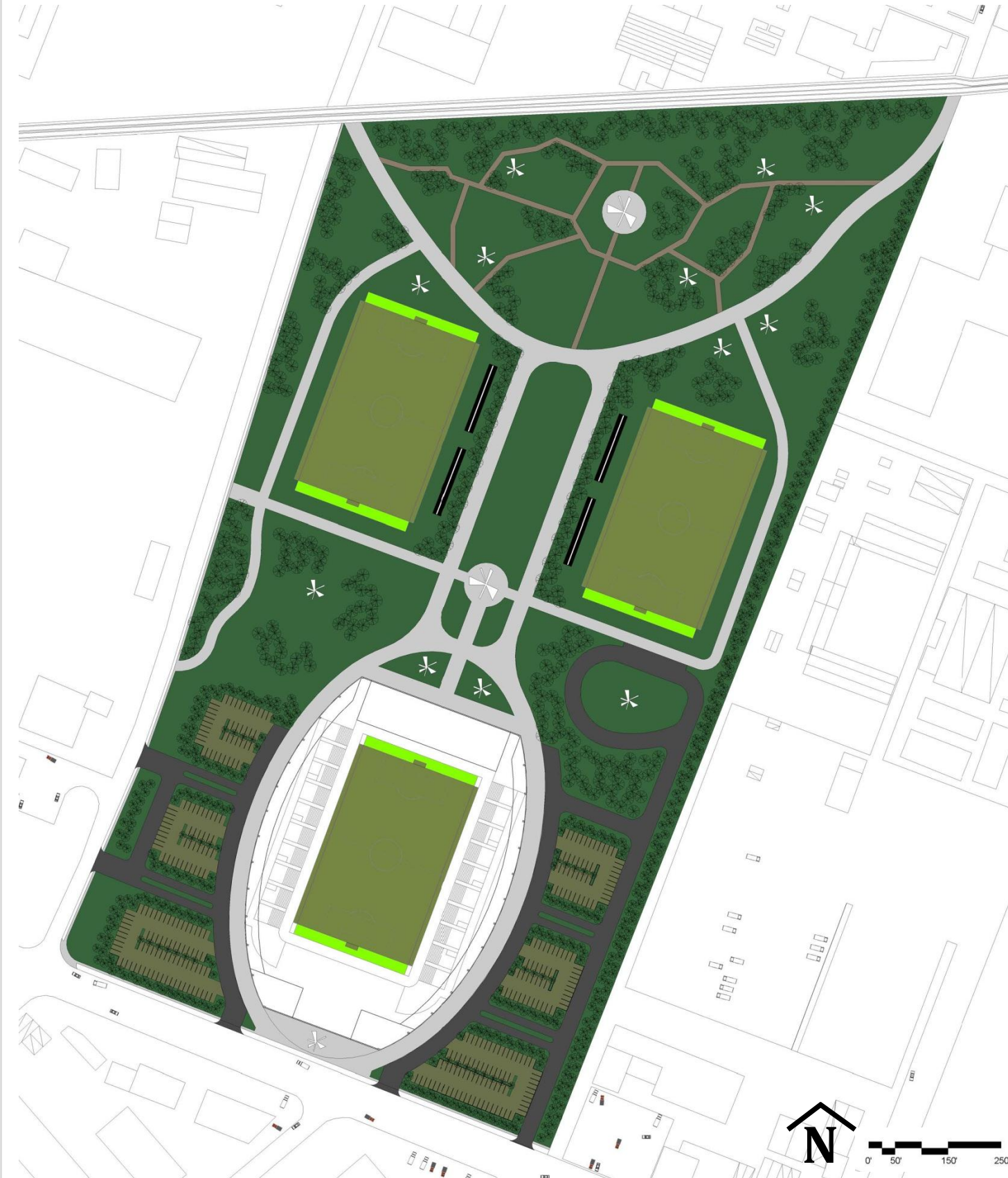
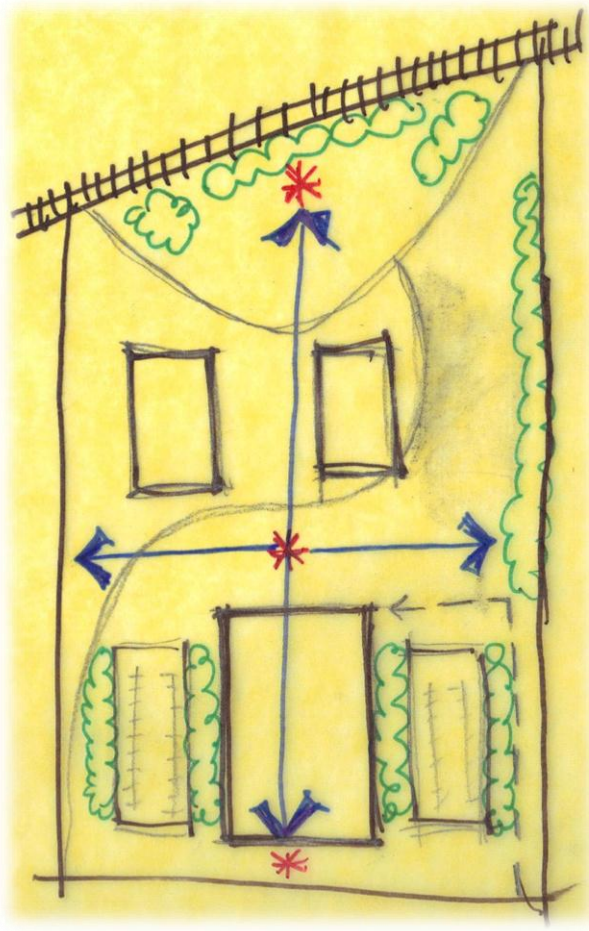
Design Concept:

Main Objectives:

- Combine systems to maximize efficiency and lower the needed footprint and impact.
- Create interaction spots between the public and the sustainable systems or structure.
- Maximize natural light into stadium with opening in the roof and changes in floor elevations.
- Replace typical materials with energy producing or materials that increase building efficiency.

Based on Figural Space Typology

aesthetic and spatial : ALTERNATE THREE



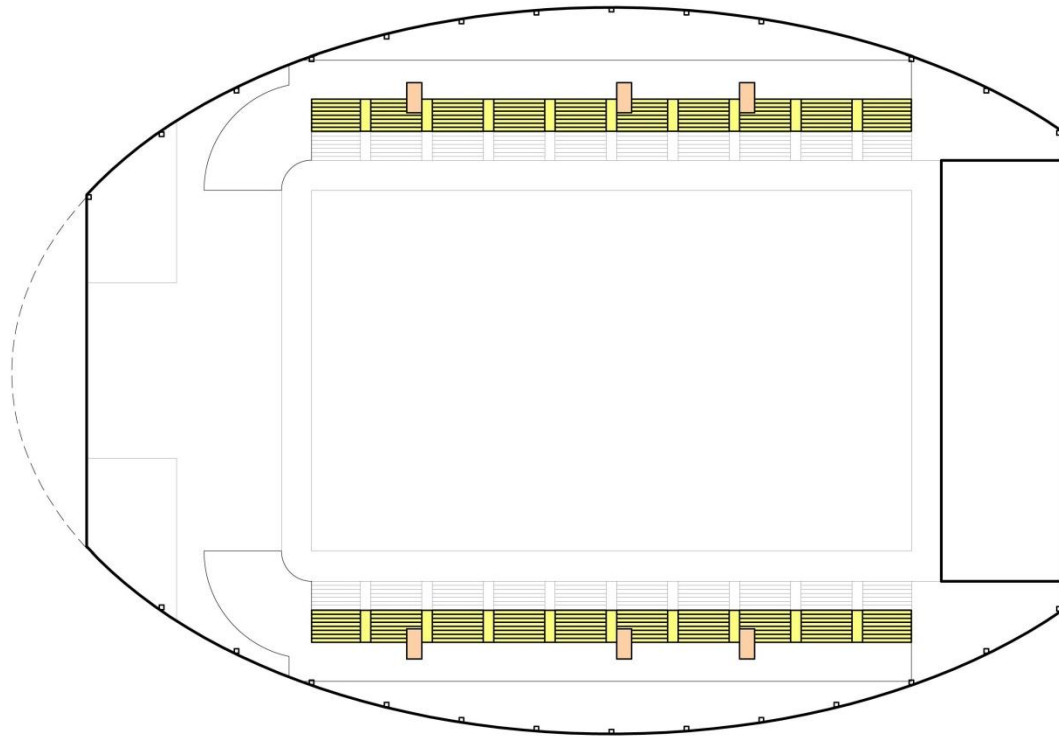
CONCEPT: A Set Piece

- Creating a strong separation between the building and the landscape
- Symmetrical form

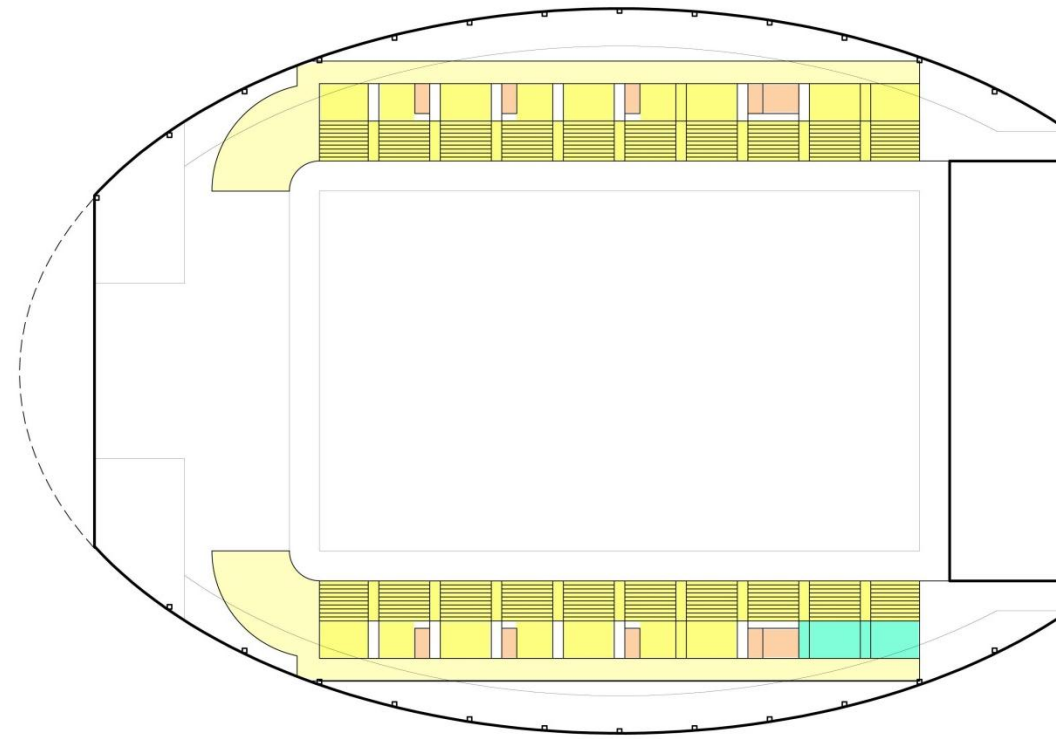
OBJECTIVES:

- Create a visual connection to the surrounding area and its monuments.
- Bring in influences from the surrounding culture and aesthetic (manufacturing) and the river (bridges)
- Create connections to the surrounding areas (Main Street and artist community) with the development of a bridge
- Place sculptures along the site to allow for a directed flow and visual through the site, highlighting key points
- Connect to the history of the site, influences from paths, helping determine division of site

SKETCHES/SITE PLAN



THIRD FLOOR PLAN



SECOND FLOOR PLAN

CONCEPT: A Set Piece

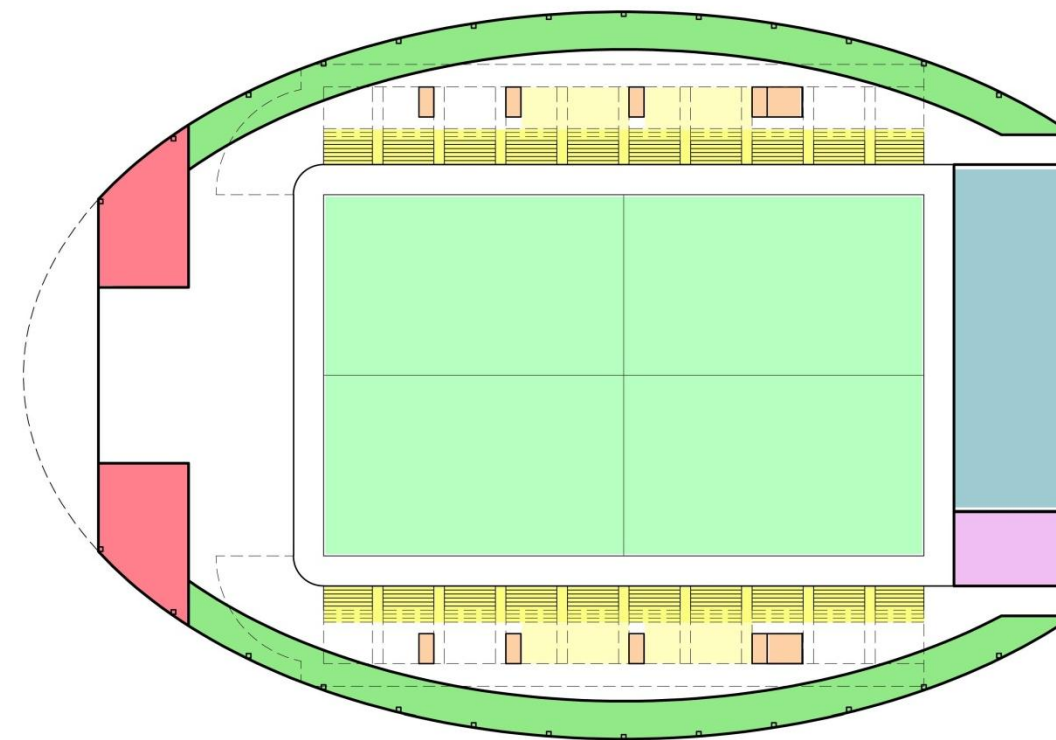
- Creating a strong separation between the building and the landscape
- Symmetrical form

OBJECTIVES:

- Create a visual connection to the surrounding area and its monuments.
- Bring in influences from the surrounding culture and aesthetic (manufacturing) and the river (bridges)
- Create connections to the surrounding areas (Main Street and artist community) with the development of a bridge
- Place sculptures along the site to allow for a directed flow and visual through the site, highlighting key points
- Connect to the history of the site, influences from paths, helping determine division of site

LEGEND

- SPECTATOR FACILITIES
- ADMINISTRATION/TICKET MANAGER
- TEAM FACILITIES
- CONCESSIONS
- VERTICAL CIRCULATION
- OPERATION SUPPORT
- MEDIA FACILITIES



FIRST FLOOR PLAN

FLOOR PLANS

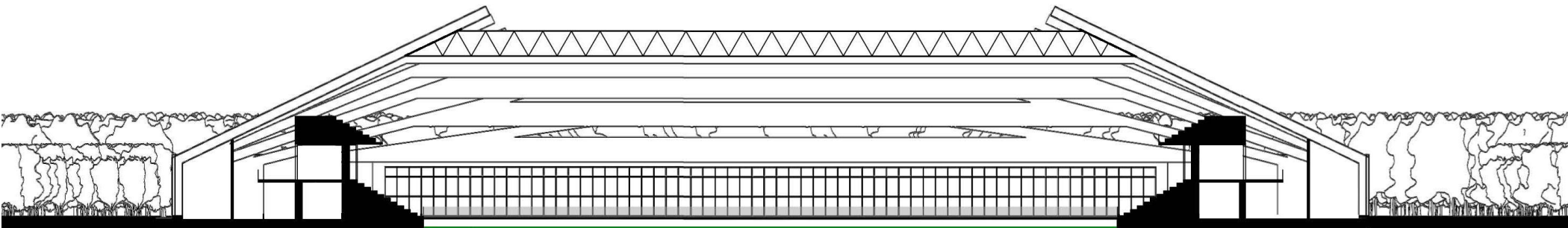
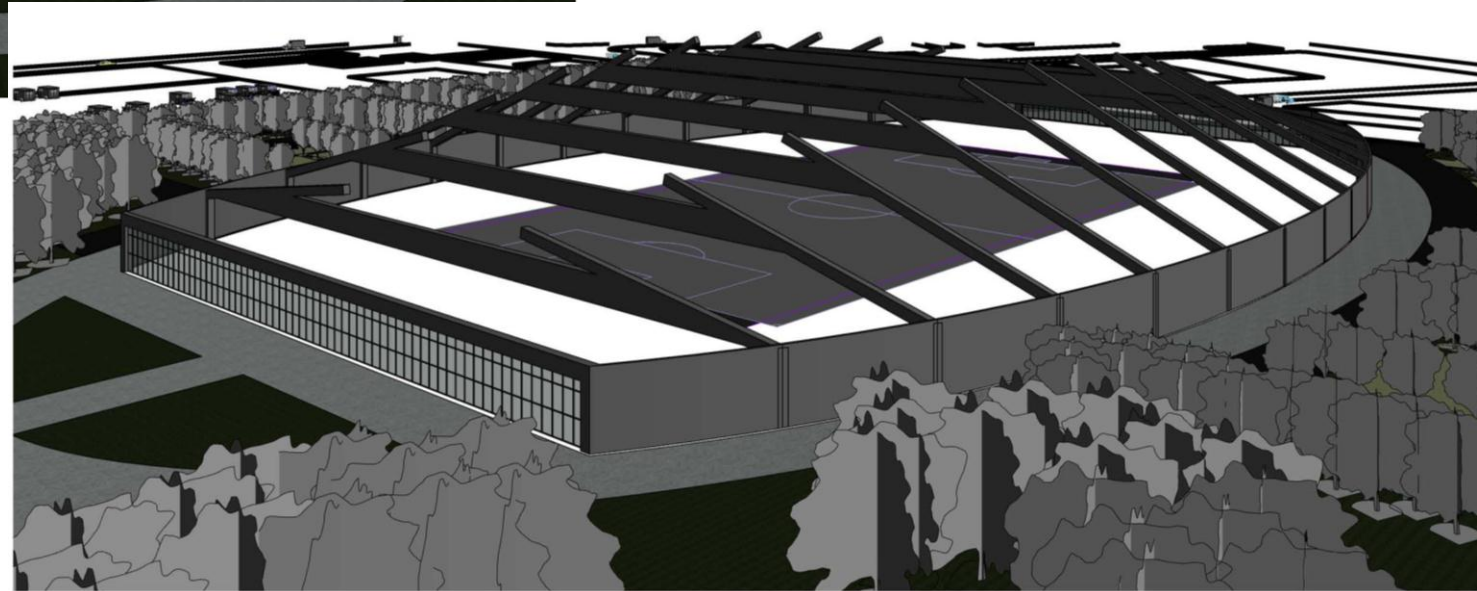
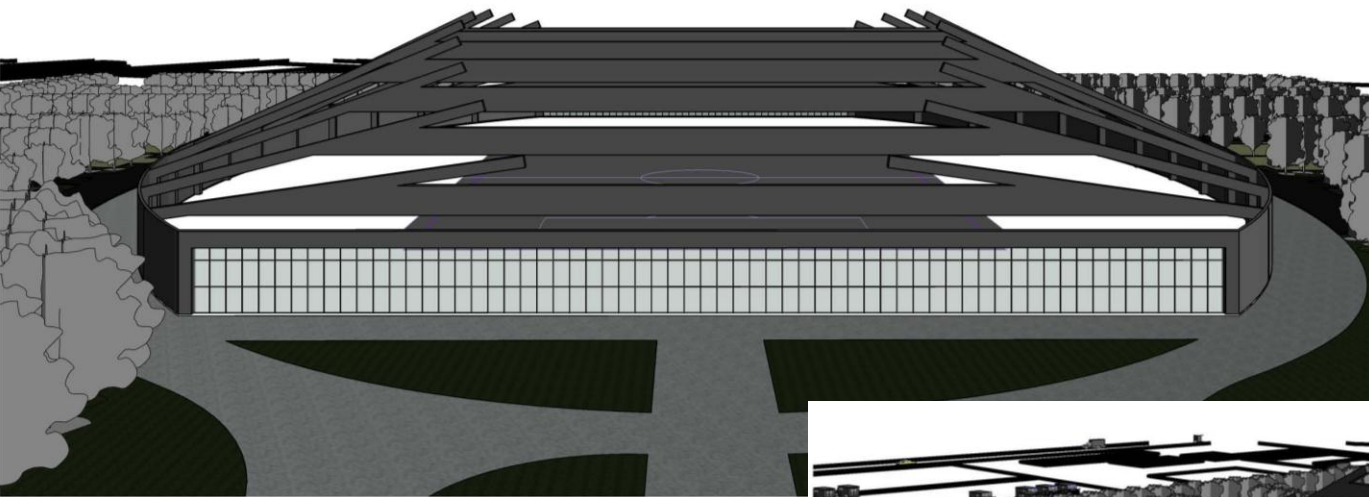
aesthetic and spatial : **ALTERNATE THREE**

CONCEPT: A Set Piece

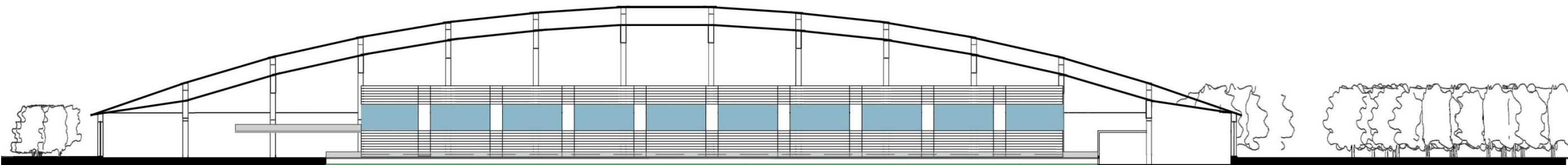
- Creating a strong separation between the building and the landscape
- Symmetrical form

OBJECTIVES:

- Create a visual connection to the surrounding area and its monuments.
- Bring in influences from the surrounding culture and aesthetic (manufacturing) and the river (bridges)
- Create connections to the surrounding areas (Main Street and artist community) with the development of a bridge
- Place sculptures along the site to allow for a directed flow and visual through the site, highlighting key points
- Connect to the history of the site, influences from paths, helping determine division of site



SECTION – WEST/EAST



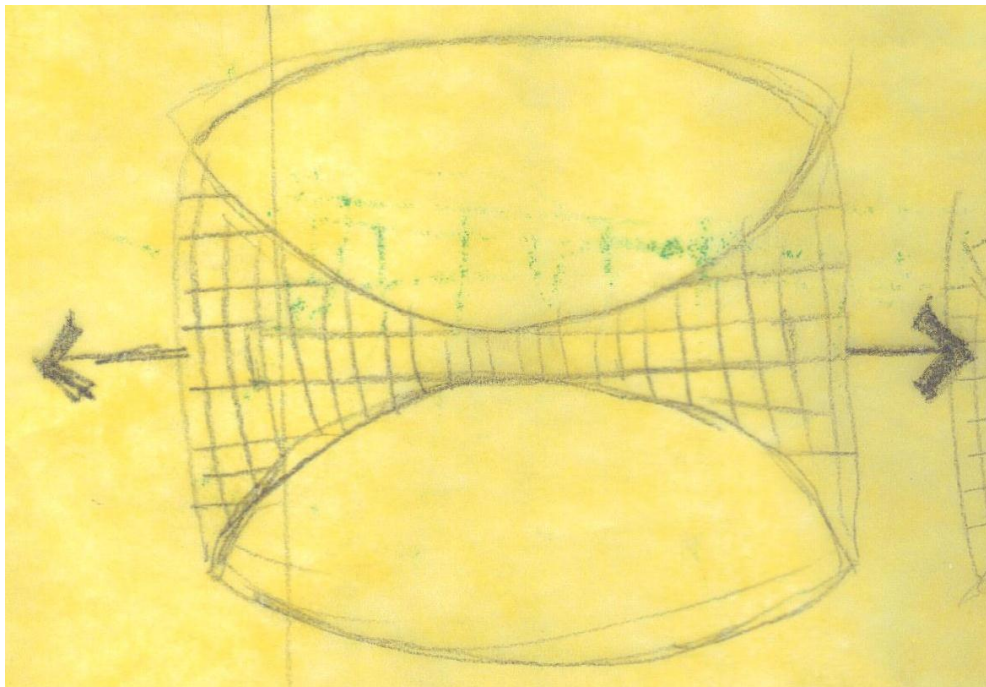
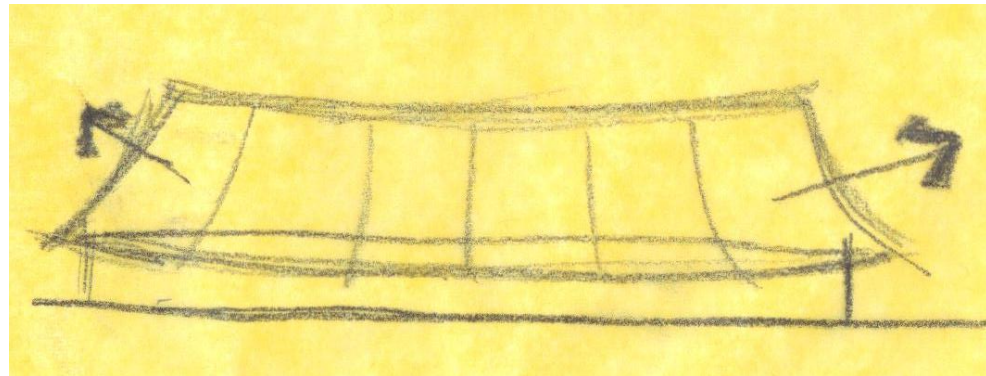
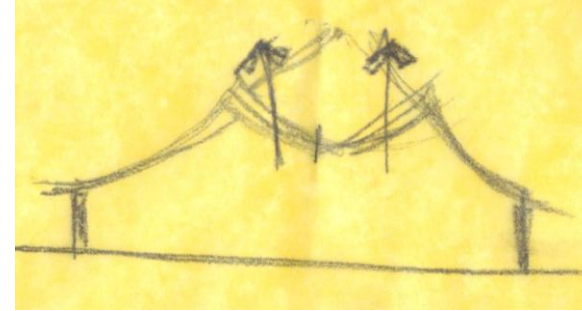
SECTION – SOUTH/NORTH

3D MODEL AND SECTIONS

aesthetic and spatial : ALTERNATE THREE



IMAGE: <http://oaklandcountychampionships.com>



CONCEPT: A Set Piece

- Creating a strong separation between the building and the landscape
- Symmetrical form

OBJECTIVES:

- Create a visual connection to the surrounding area and its monuments.
- Bring in influences from the surrounding culture and aesthetic (manufacturing) and the river (bridges)
- Create connections to the surrounding areas (Main Street and artist community) with the development of a bridge
- Place sculptures along the site to allow for a directed flow and visual through the site, highlighting key points
- Connect to the history of the site, influences from paths, helping determine division of site

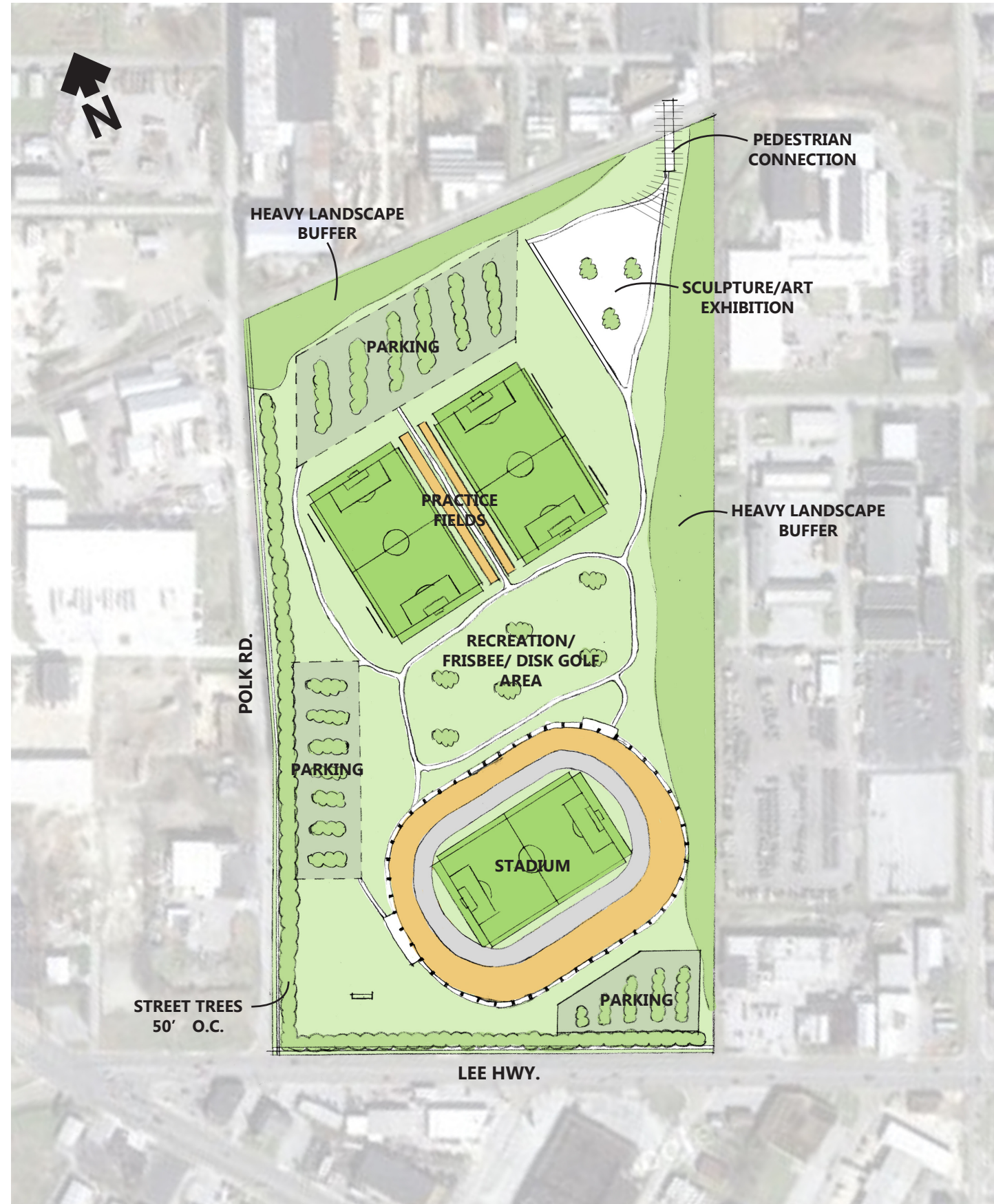
OPTION 2

MONTAGUE PARK STADIUM Chattanooga, TN

Amanda Kight

ARC 5824 Advanced Design Studio 2
Module 2 Preliminary Conceptual Design

alternate 4: Site and Context



Objectives

Primary

- Respond to natural features, such as Lookout Mountain, through the structure/form
- Utilize site organization/axis to create a connection to Downtown Chattanooga
- Connect to the future and existing greenways through a pedestrian link

Secondary

- Utilize industrial materials to relate to the adjacent context
- Maintain/ expand the sculpture park in an effort to connect to the nearby artist community
- Express the existing/past street grid in the site organization

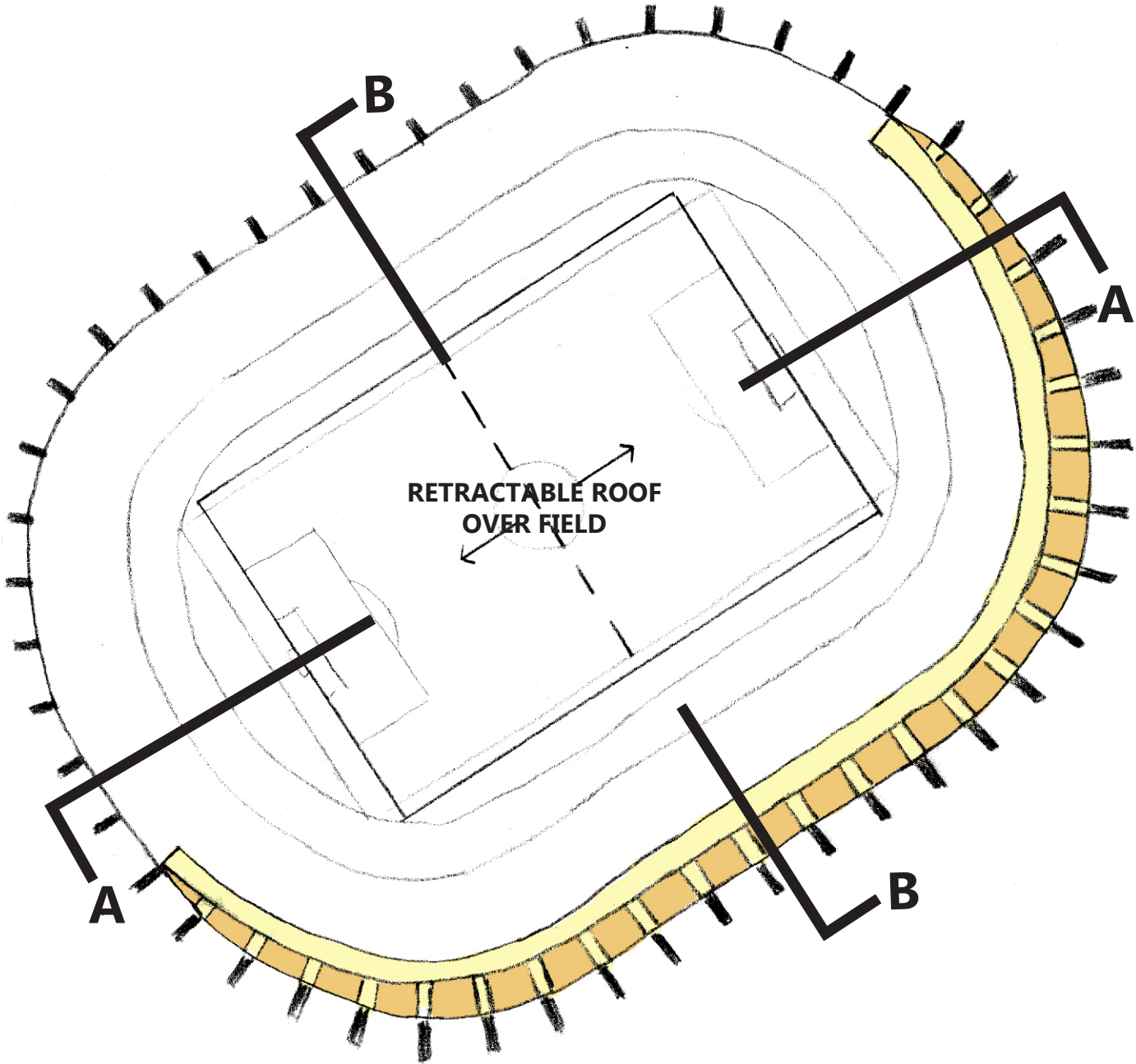
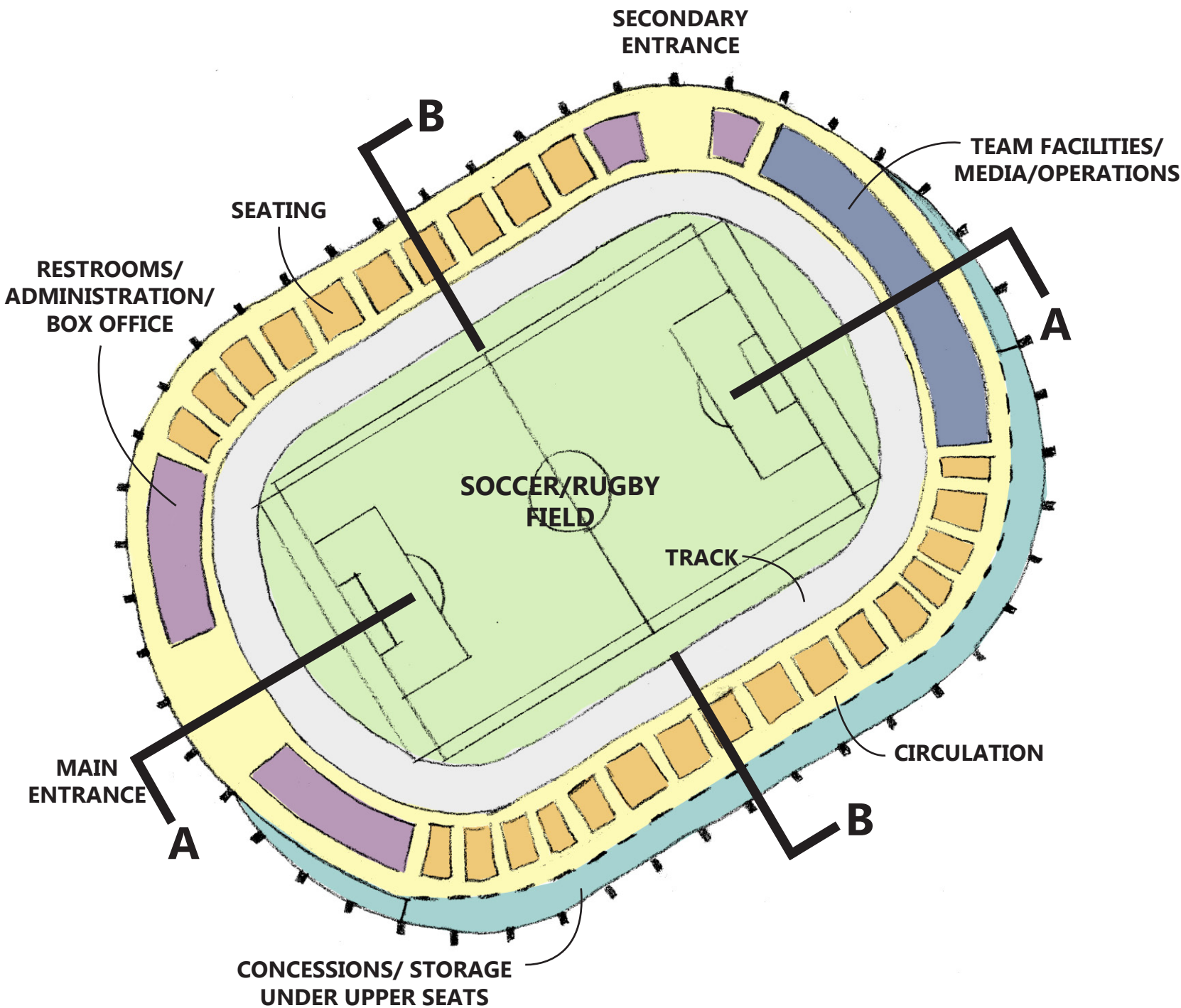
CONCEPTUAL SITE PLAN

1" = 300'

MONTAGUE PARK STADIUM Chattanooga, TN

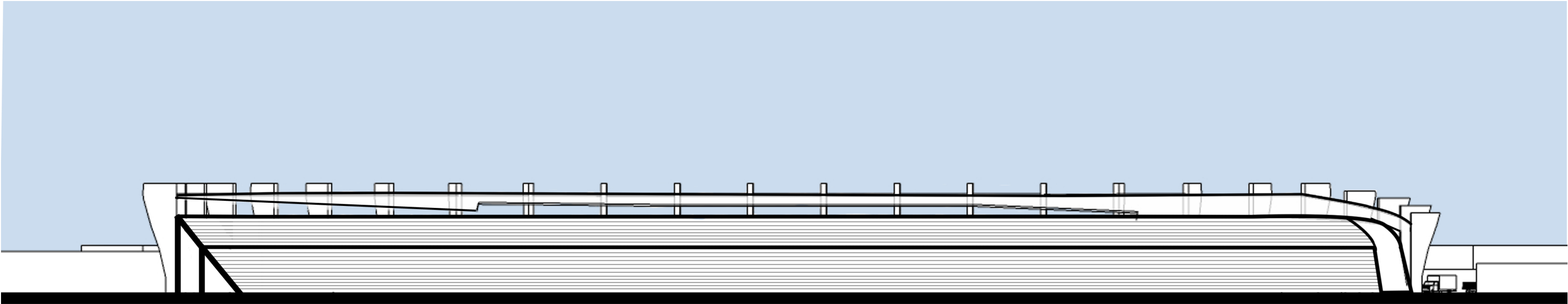
alternate 4: Site and Context

Amanda Kight
ARC 5824 Advanced Design Studio 2
Module 2 Preliminary Conceptual Design

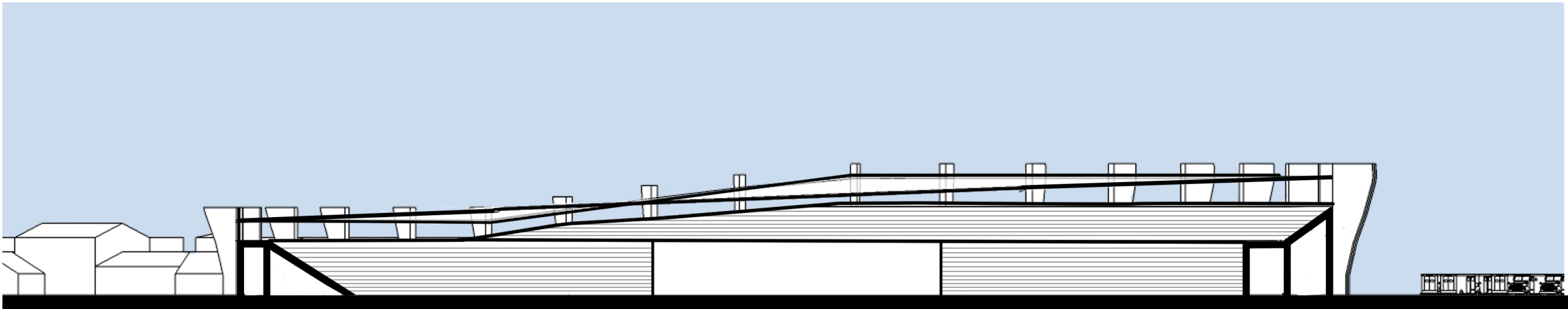


CONCEPTUAL PLANS

1" = 100'



SECTION A



SECTION B

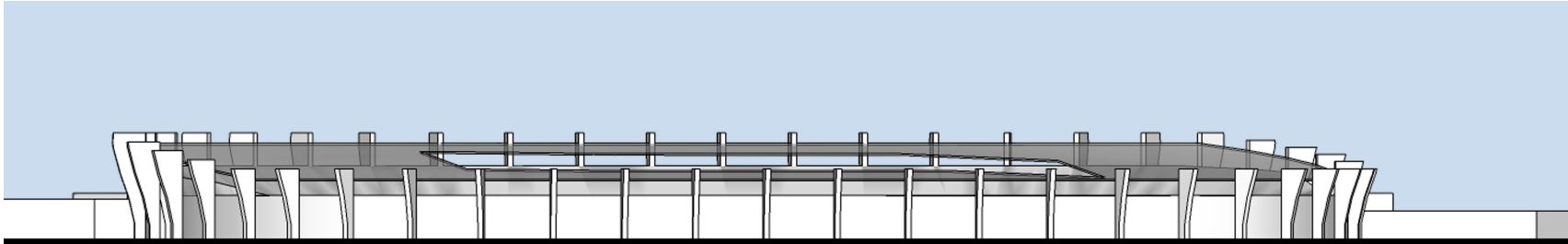
CONCEPTUAL SECTIONS

0 100'

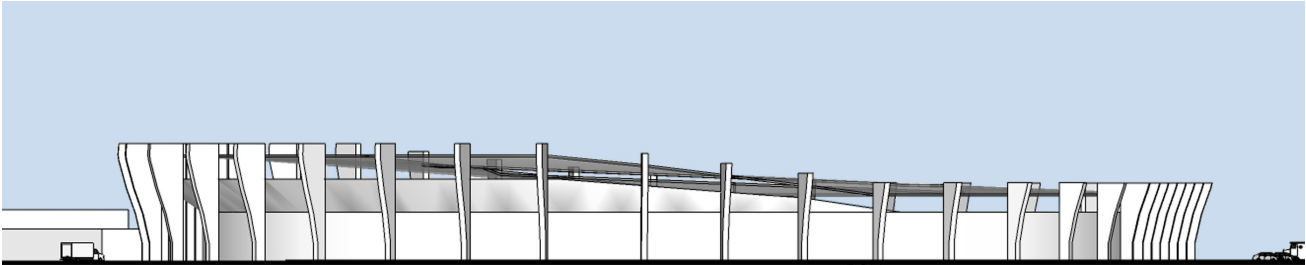
MONTAGUE PARK STADIUM Chattanooga, TN

alternate 4: Site and Context

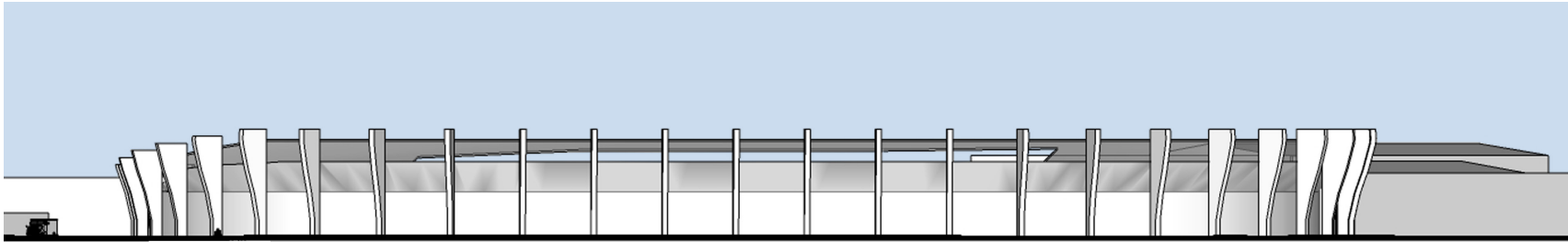
Amanda Kight
ARC 5824 Advanced Design Studio 2
Module 2 Preliminary Conceptual Design



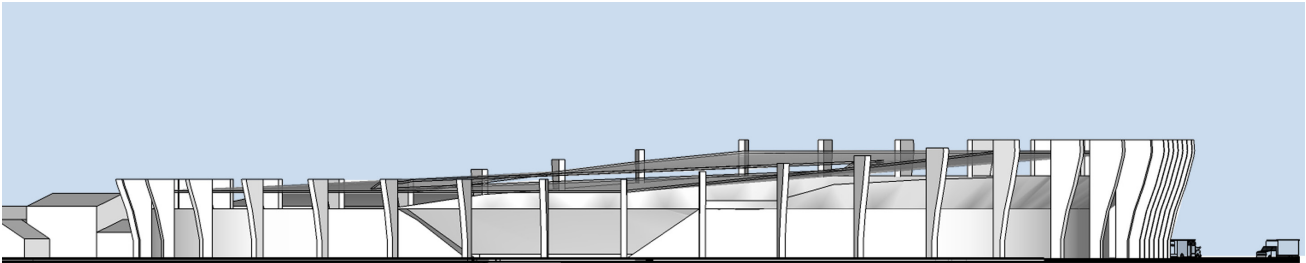
NORTH



EAST



SOUTH

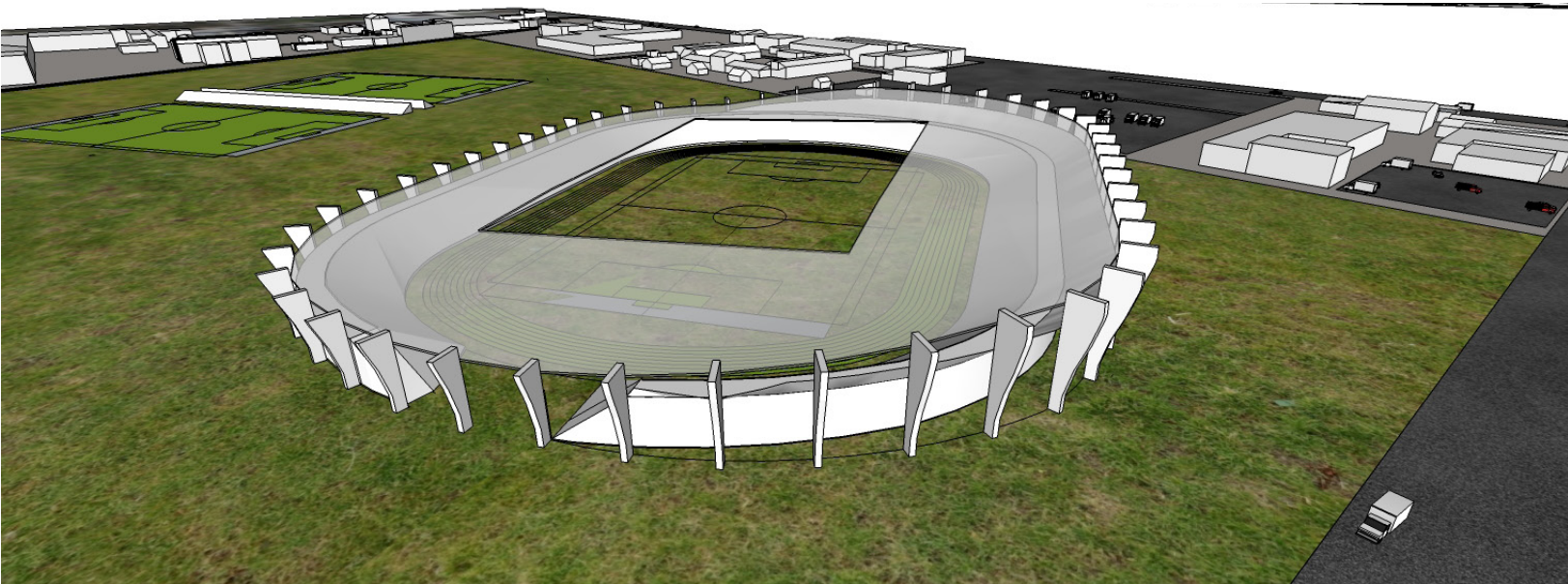


WEST

ELEVATIONS
0 100'



3D MASSING



Proposed Stadium Design

Alternative #1 - Site Context



Site Plan

0' 150' 300' 600'



Program Key

- Seating Bowl
- Concessions
- Operations Support
- Team Facilities
- Medical Facilities
- Restrooms
- Field Storage
- Media Facilities (Lower)
- Suites

Site Plan Key

- Vegetation
- Sculptor Area
- Building footprint

Design Concept:

Main Objectives:

- Incorporate the natural shape of the river into the form of the building.
- Create a visual link connecting the corners of site.
- Form of Lookout Mountain influences the connection of the building and the site .

Based on Set Piece Space Typology:

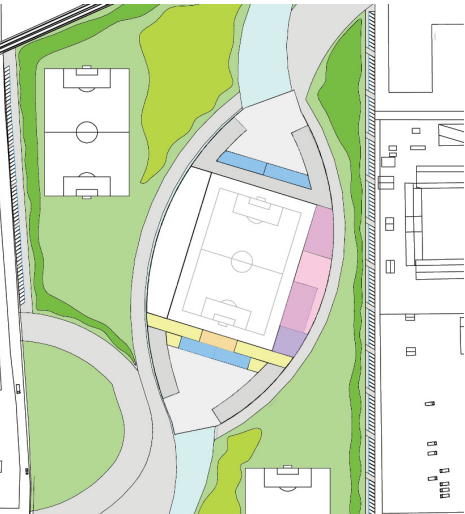
For fluid motion with the movement of the roof that bridges the two sides of the site.



Upper Bowl



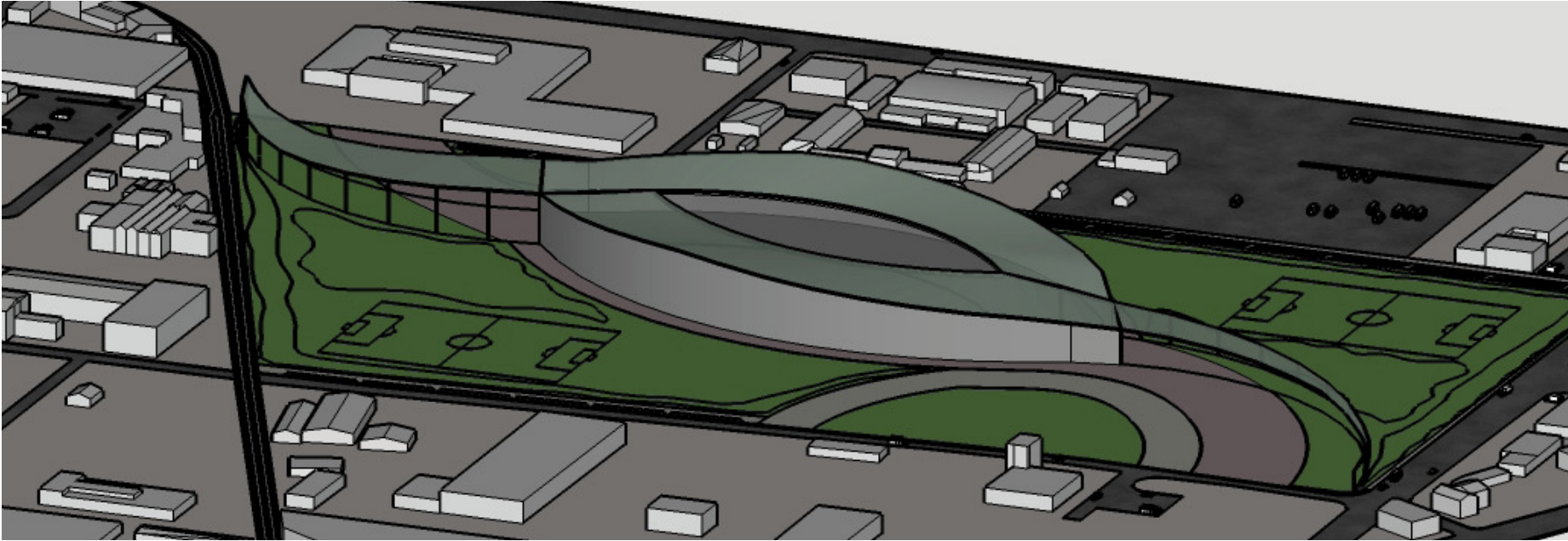
Seating Bowl



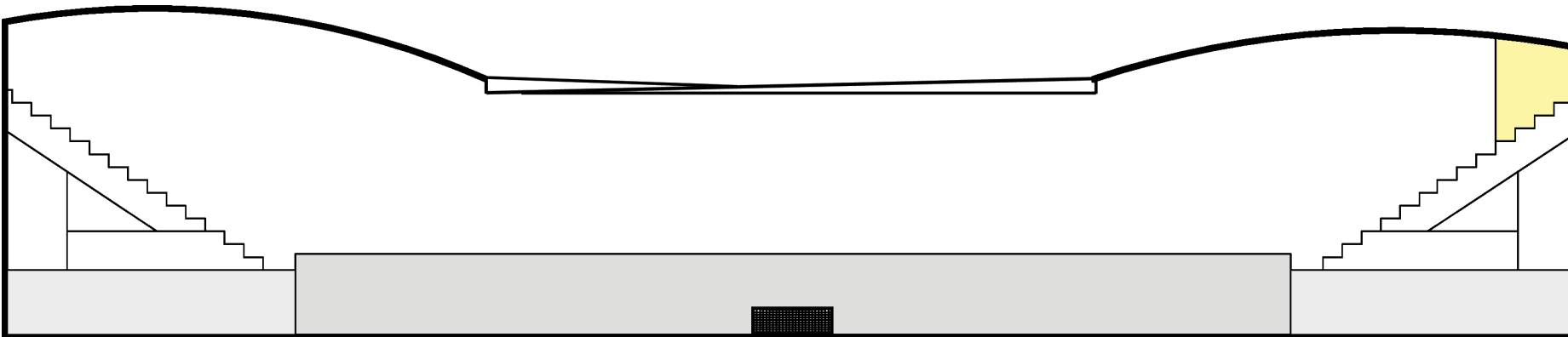
Ground Floor

Proposed Stadium Design

Alternative #1 - Site Context



3D View



Section

Design Concept:

Main Objectives:

- Incorporate the natural shape of the river into the form of the building.
- Create a visual link connecting the corners of site.
- Form of Lookout Mountain influences the connection of the building and the site .

Based on Set Piece Space Typology:

For fluid motion with the movement of the roof that bridges the two sides of the site.

Program Key

Media Suites (Upper)